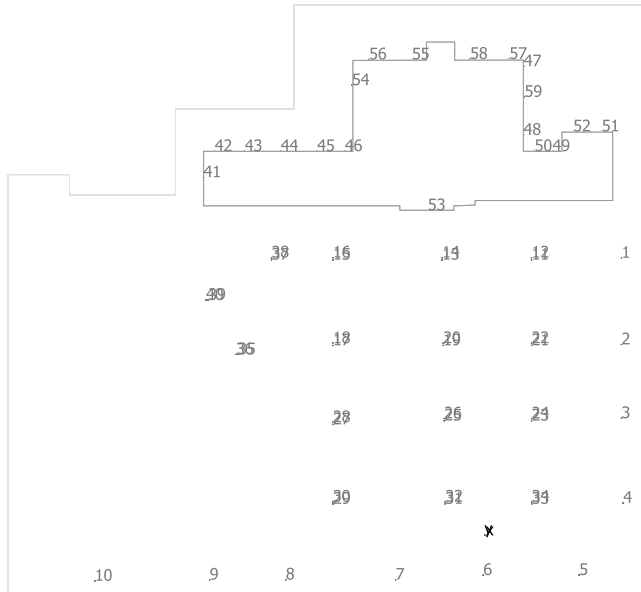


Site 1



Bravoled Lighting Manufacturing Co., Ltd. BL-PKL-277V-300W-xxxx

No.	X [ft]	Y [ft]	Mounting height [ft]
1	191.927	388.775	40.000
2	191.927	267.385	40.000
3	191.927	164.040	40.000
4	194.387	45.275	40.000
5	132.708	-55.774	40.000
6	-1.750	-55.890	40.000
7	-124.670	-62.335	40.000
8	-278.524	-62.171	40.000
9	-385.241	-62.359	40.000
10	-546.253	-63.976	40.000
11	65.880	386.105	40.000
12	65.880	389.105	40.000
13	-59.549	386.105	40.000
14	-59.549	389.105	40.000
15	-212.524	386.105	40.000
16	-212.524	389.105	40.000
17	-212.524	266.049	40.000
18	-212.524	269.049	40.000
19	-57.981	266.049	40.000
20	-57.981	269.049	40.000

No.	X [ft]	Y [ft]	Mounting height [ft]
21	65.880	266.049	40.000
22	65.880	269.049	40.000
23	65.880	160.625	40.000
24	65.880	163.625	40.000
25	-56.571	160.625	40.000
26	-56.571	163.625	40.000
27	-212.524	155.291	40.000
28	-212.524	158.291	40.000
29	-212.524	43.939	40.000
30	-212.524	46.939	40.000
31	-54.951	43.939	40.000
32	-54.951	46.939	40.000
33	66.084	43.939	40.000
34	66.084	46.939	40.000
35	-345.445	253.442	40.000
36	-348.445	253.442	40.000
37	-298.553	386.105	40.000
38	-298.553	389.105	40.000
39	-387.275	329.720	40.000
40	-390.275	329.720	40.000

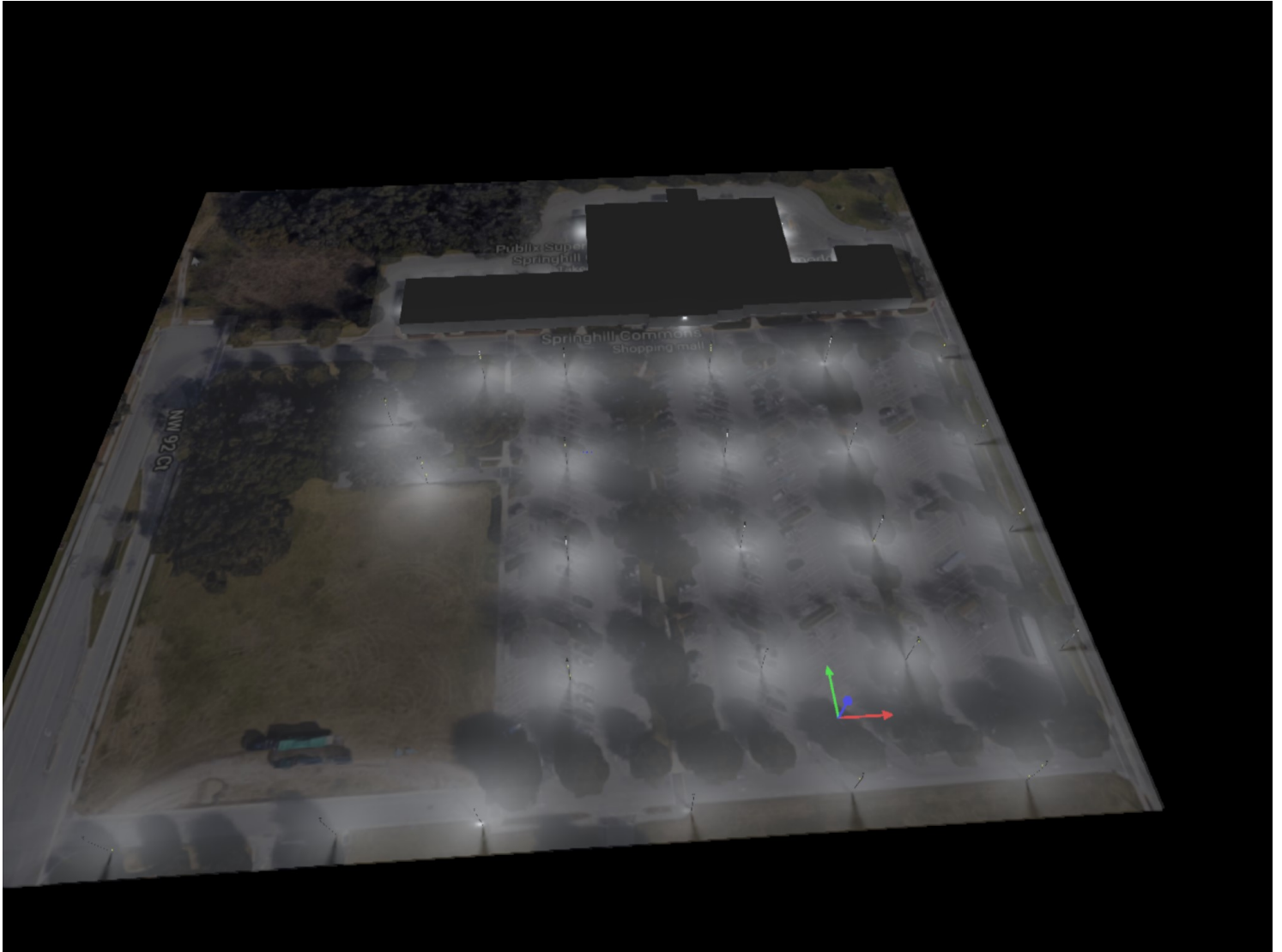
ASSMART LIGHT CO., LTD AST-SWP01-80AA1-40

No.	X [ft]	Y [ft]	Mounting height [ft]
41	-393.860	501.611	14.000
42	-378.135	538.215	14.000
43	-336.047	538.215	14.000
44	-285.601	538.215	14.000
45	-234.558	538.215	14.000
46	-195.727	538.215	14.000
47	54.953	657.213	14.000
48	54.675	561.017	14.000
49	95.185	538.215	14.000
50	70.185	538.215	14.000
51	164.285	565.938	14.000
52	124.285	565.938	14.000
53	-79.397	455.317	14.000

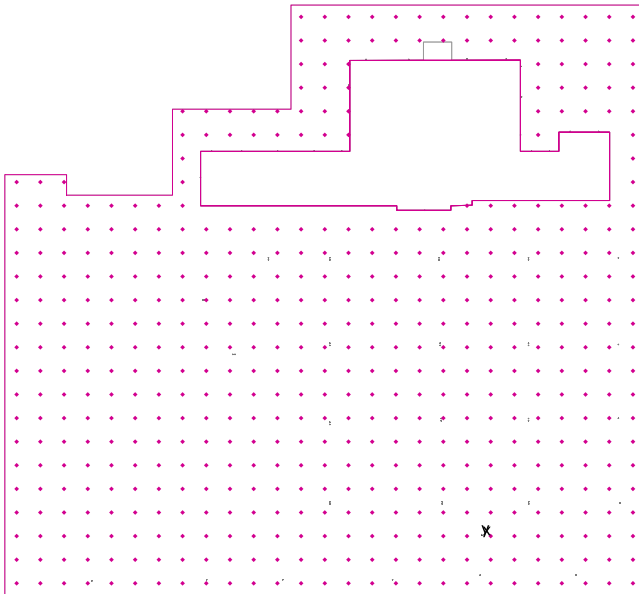
Bravoled Lighting Manufacturing Co., Ltd. BL-PKL-277V-150W-XXXX

No.	X [ft]	Y [ft]	Mounting height [ft]
54	-185.873	630.601	14.000
55	-101.753	666.827	14.000
56	-161.753	666.827	14.000
57	34.844	667.483	14.000
58	-20.193	667.483	14.000
59	56.086	614.330	14.000

9200 northwest



Calculation surface / Perpendicular illuminance



Light loss factor: 0.80

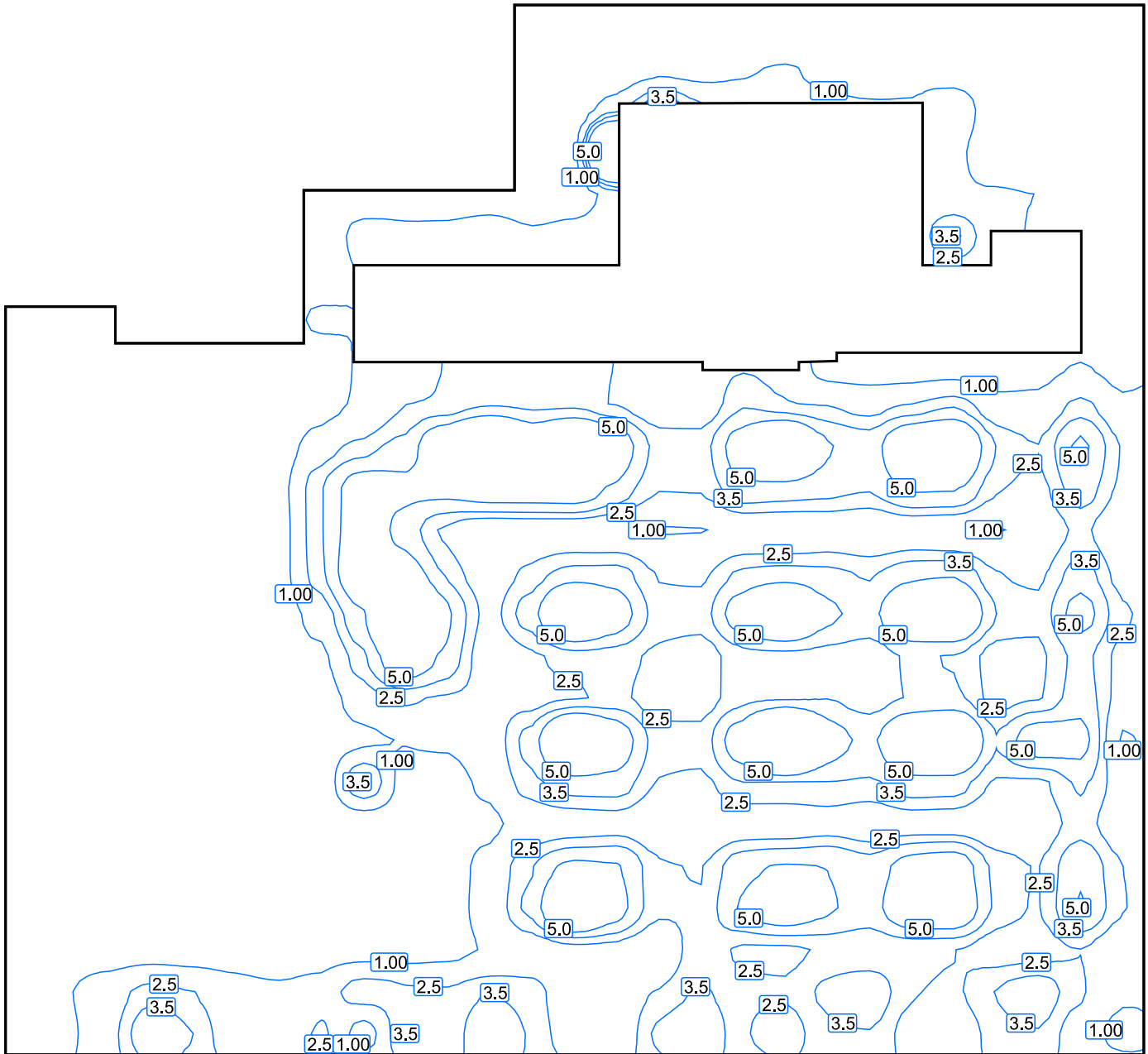
Calculation surface: Perpendicular illuminance (Grid)

Light scene: Light scene 1

Average: 2.18 fc, Min: 0.002 fc, Max: 20.9 fc, Mean/Min: 871, Max/Min: 8341

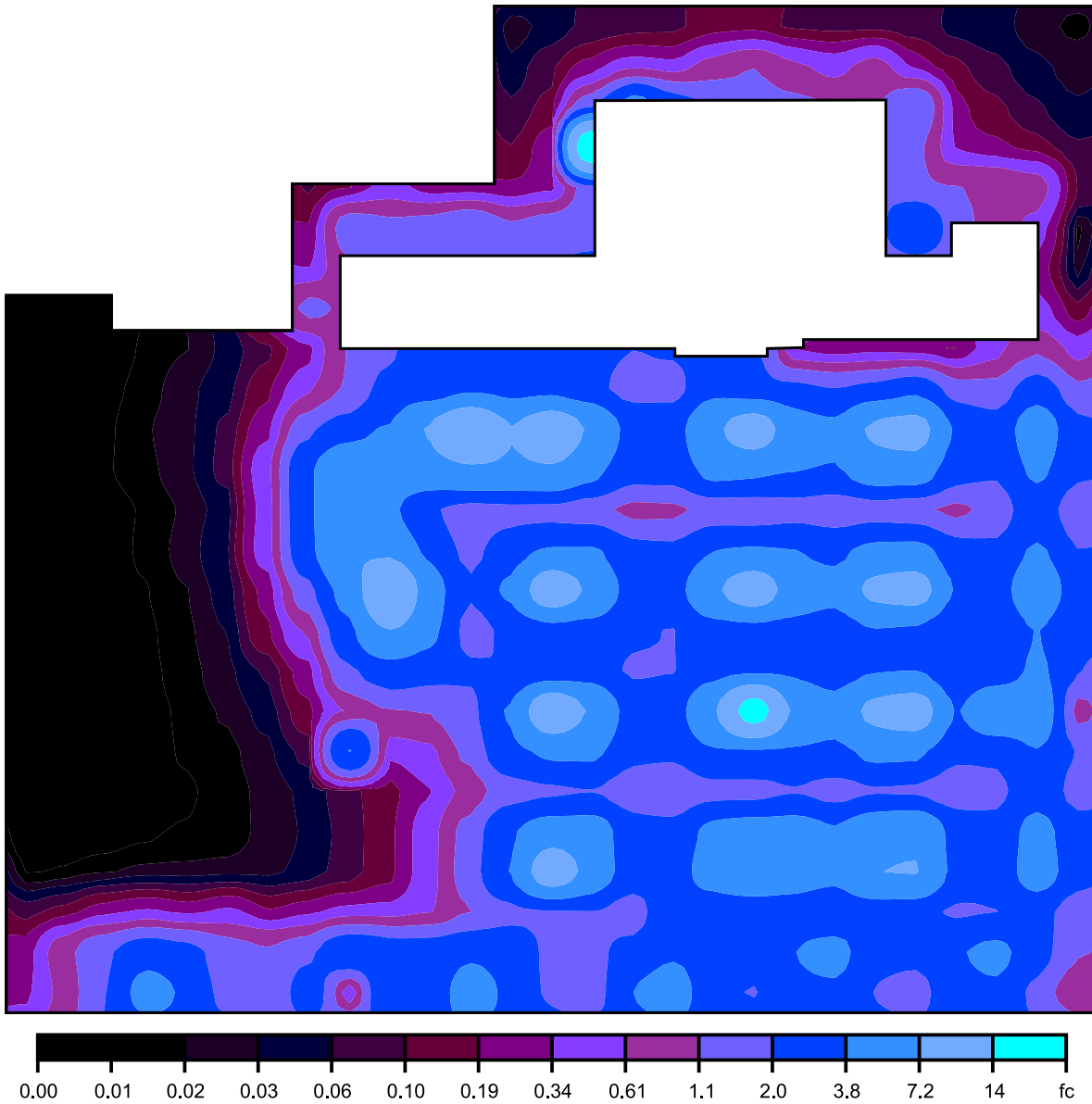
Height: 0.000 ft

Isolines [fc]



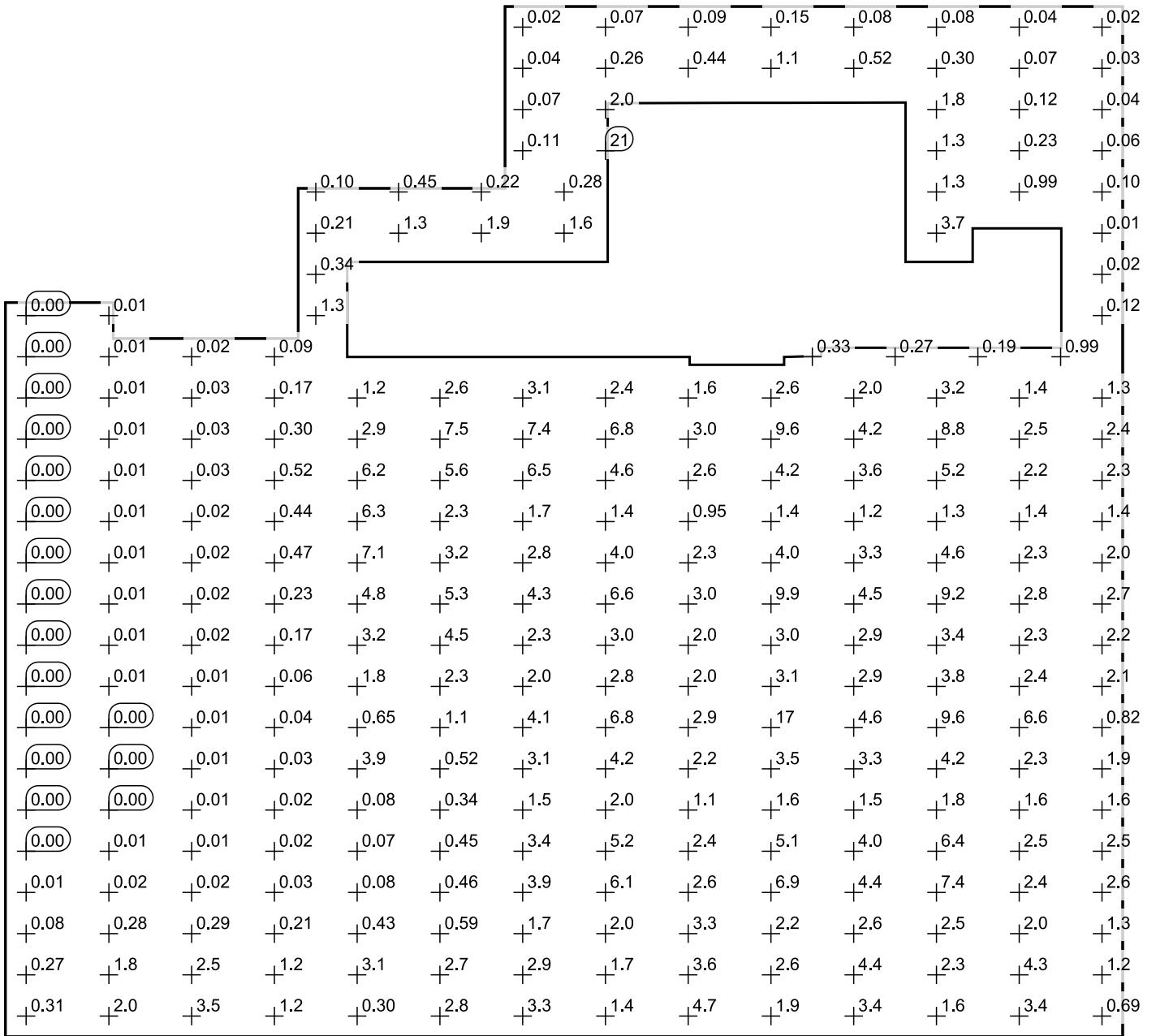
Scale: 1 : 1500

False colors [fc]



Scale: 1 : 1750

Value grid [fc]



Scale: 1 : 1500