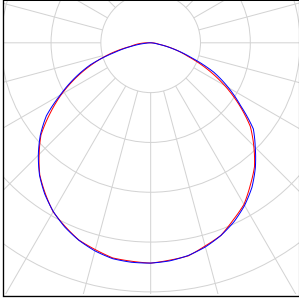


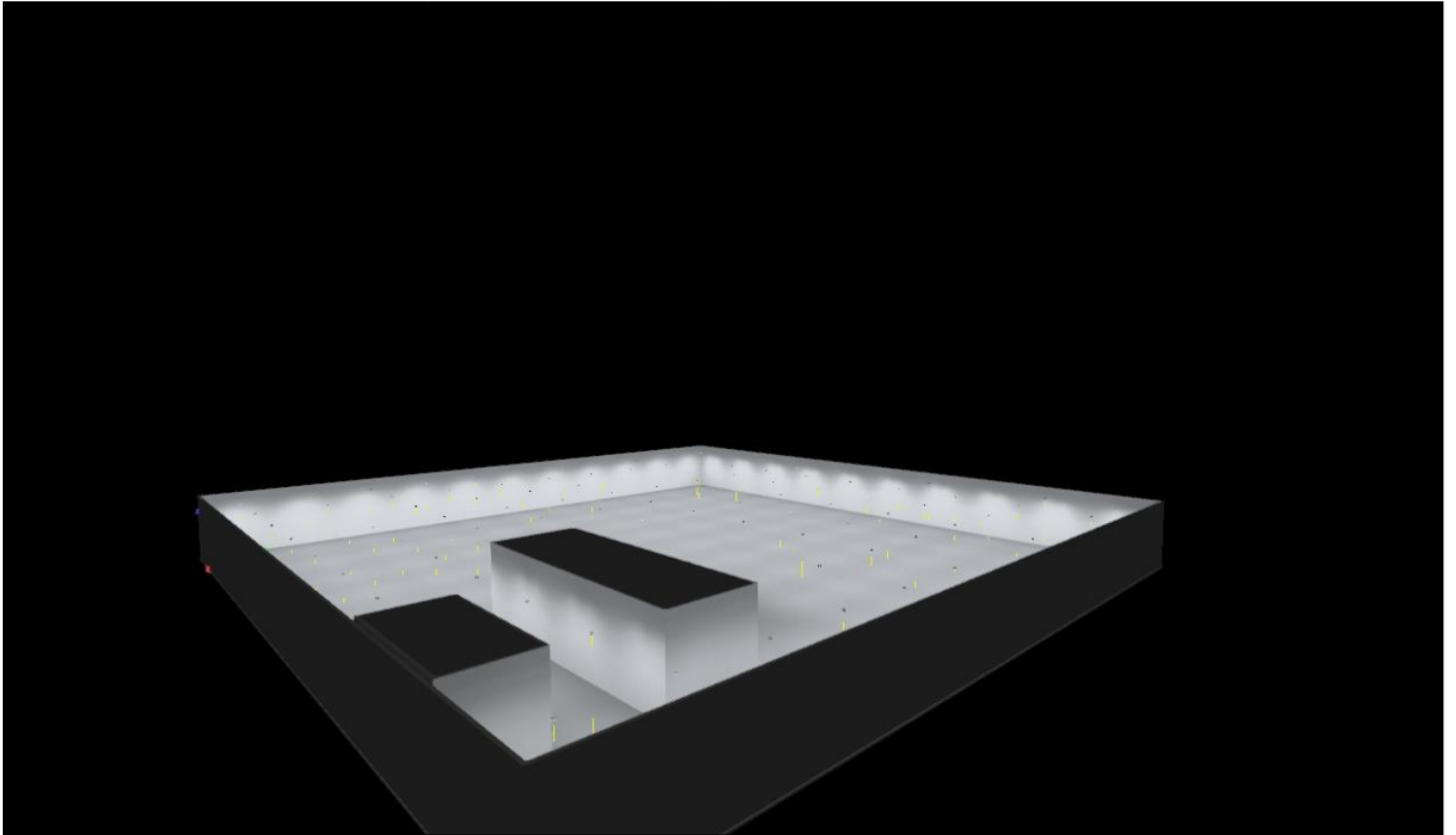
200-200 150w 106 lights

Quantity	Luminaire (Luminous emittance)		
105	<p>DIALux - HB07-150W NW PC CLEAR Luminous emittance 1 Fitting: 1xNW Light output ratio: 99.94% Lamp luminous flux: 19657 lm Luminaire luminous flux: 19645 lm Power: 149.0 W Luminous efficacy: 131.8 lm/W</p> <p>Colorimetric data 1x: CCT 3000 K, CRI 100 Luminaire classification in acc. with DIN: A40 Luminaire classification in acc. with BZ: BZ 5/0.75/BZ 4 Luminaire classification in acc. with UTE: 1.00D Luminaire classification in acc. with CIE: 100 CIE flux code: 48 81 97 100 100</p>	<p>See our luminaire catalog for an image of the luminaire.</p>	

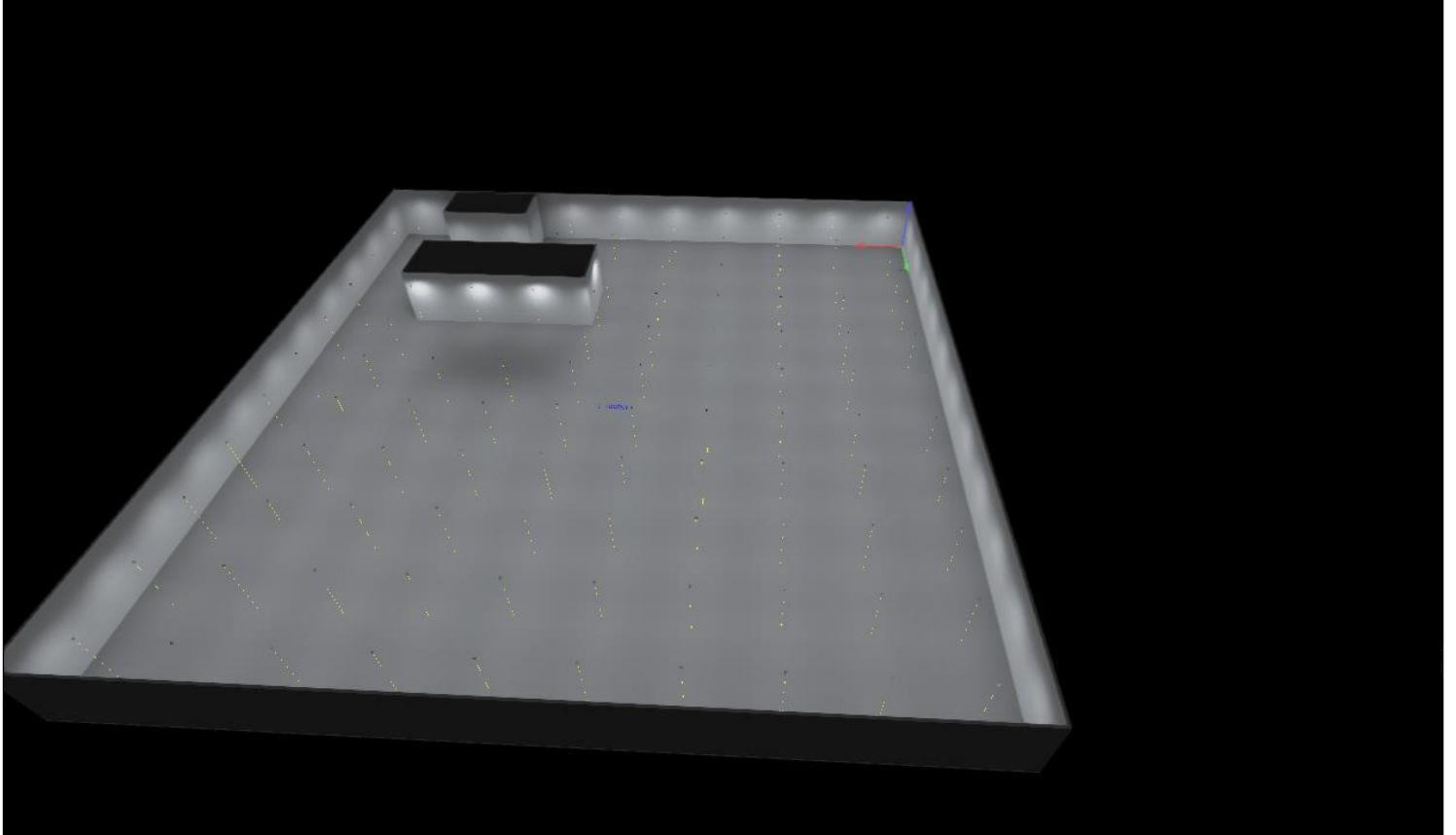
Total lamp luminous flux: 2063985 lm, Total luminaire luminous flux: 2062725 lm, Total Load: 15645.0 W, Luminous efficacy: 131.8 lm/W

Room 1

Storey 1 (4)



Storey 1 (3)



Room 1

.1	.12	.23	.34	.45	.56	.67	.76	.88	.79
.2	.13	.24	.35	.46	.57	.68	.77	.87	.94
.3	.14	.25	.36	.47	.58	.69	.78	.86	.95
.4	.15	.26	.37	.48	.59	.70	.93	.85	.96
.5	.16	.27	.38	.49	.60	.71	.92	.84	.97
.6	.17	.28	.39	.50	.61	.72	.91	.83	.98
.7	.18	.29	.40	.51	.62	.105	.104	.82	.99
.8	.19	.30	.41	.52	.63	.73	.90	.81	.100
.9	.20	.31	.42	.53	.64				.101
.10	.21	.32	.43	.54	.65	.74	.89	.80	.102
.11	.22	.33	.44	.55	.66	.75			.103

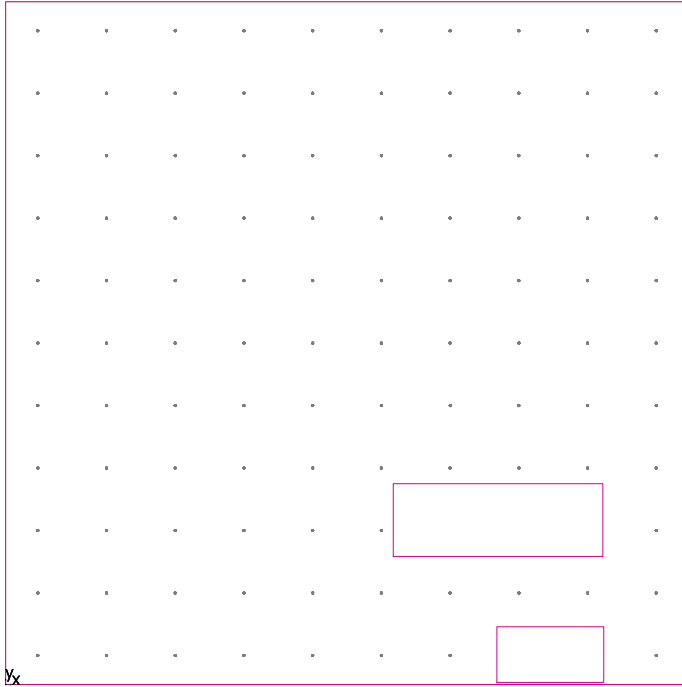
DIALux HB07-150W NW PC CLEAR

No.	X [ft]	Y [ft]	Mounting height [ft]	Housing rotation [°]
1	9.415	191.500	17.000	0.0
2	9.415	173.200	17.000	0.0
3	9.415	154.900	17.000	0.0
4	9.415	136.600	17.000	0.0
5	9.415	118.300	17.000	0.0
6	9.415	100.000	17.000	0.0
7	9.415	81.700	17.000	0.0
8	9.415	63.400	17.000	0.0
9	9.415	45.100	17.000	0.0
10	9.415	26.800	17.000	0.0
11	9.415	8.500	17.000	0.0
12	29.545	191.500	17.000	0.0
13	29.545	173.200	17.000	0.0
14	29.545	154.900	17.000	0.0
15	29.545	136.600	17.000	0.0
16	29.545	118.300	17.000	0.0
17	29.545	100.000	17.000	0.0
18	29.545	81.700	17.000	0.0
19	29.545	63.400	17.000	0.0

No.	X [ft]	Y [ft]	Mounting height [ft]	Housing rotation [°]
20	29.545	45.100	17.000	0.0
21	29.545	26.800	17.000	0.0
22	29.545	8.500	17.000	0.0
23	49.675	191.500	17.000	0.0
24	49.675	173.200	17.000	0.0
25	49.675	154.900	17.000	0.0
26	49.675	136.600	17.000	0.0
27	49.675	118.300	17.000	0.0
28	49.675	100.000	17.000	0.0
29	49.675	81.700	17.000	0.0
30	49.675	63.400	17.000	0.0
31	49.675	45.100	17.000	0.0
32	49.675	26.800	17.000	0.0
33	49.675	8.500	17.000	0.0
34	69.805	191.500	17.000	0.0
35	69.805	173.200	17.000	0.0
36	69.805	154.900	17.000	0.0
37	69.805	136.600	17.000	0.0
38	69.805	118.300	17.000	0.0
39	69.805	100.000	17.000	0.0
40	69.805	81.700	17.000	0.0
41	69.805	63.400	17.000	0.0
42	69.805	45.100	17.000	0.0
43	69.805	26.800	17.000	0.0
44	69.805	8.500	17.000	0.0
45	89.935	191.500	17.000	0.0
46	89.935	173.200	17.000	0.0
47	89.935	154.900	17.000	0.0
48	89.935	136.600	17.000	0.0
49	89.935	118.300	17.000	0.0
50	89.935	100.000	17.000	0.0
51	89.935	81.700	17.000	0.0
52	89.935	63.400	17.000	0.0
53	89.935	45.100	17.000	0.0
54	89.935	26.800	17.000	0.0
55	89.935	8.500	17.000	0.0
56	110.065	191.500	17.000	0.0
57	110.065	173.200	17.000	0.0
58	110.065	154.900	17.000	0.0
59	110.065	136.600	17.000	0.0
60	110.065	118.300	17.000	0.0
61	110.065	100.000	17.000	0.0
62	110.065	81.700	17.000	0.0
63	110.065	63.400	17.000	0.0
64	110.065	45.100	17.000	0.0
65	110.065	26.800	17.000	0.0
66	110.065	8.500	17.000	0.0
67	130.195	191.500	17.000	0.0

No.	X [ft]	Y [ft]	Mounting height [ft]	Housing rotation [°]
68	130.195	173.200	17.000	0.0
69	130.195	154.900	17.000	0.0
70	130.195	136.600	17.000	0.0
71	130.195	118.300	17.000	0.0
72	130.195	100.000	17.000	0.0
73	130.195	63.400	17.000	0.0
74	130.195	26.800	17.000	0.0
75	130.195	8.500	17.000	0.0
76	150.325	191.500	17.000	0.0
77	150.325	173.200	17.000	0.0
78	150.325	154.900	17.000	0.0
79	190.585	191.500	17.000	0.0
80	170.455	26.800	17.000	0.0
81	170.455	63.400	17.000	0.0
82	170.455	81.700	17.000	0.0
83	170.455	100.000	17.000	0.0
84	170.455	118.300	17.000	0.0
85	170.455	136.600	17.000	0.0
86	170.455	154.900	17.000	0.0
87	170.455	173.200	17.000	0.0
88	170.455	191.500	17.000	0.0
89	150.325	26.800	17.000	0.0
90	150.325	63.400	17.000	0.0
91	150.325	100.000	17.000	0.0
92	150.325	118.300	17.000	0.0
93	150.325	136.600	17.000	0.0
94	190.585	173.200	17.000	0.0
95	190.585	154.900	17.000	0.0
96	190.585	136.600	17.000	0.0
97	190.585	118.300	17.000	0.0
98	190.585	100.000	17.000	0.0
99	190.585	81.700	17.000	0.0
100	190.585	63.400	17.000	0.0
101	190.585	45.100	17.000	0.0
102	190.585	26.800	17.000	0.0
103	190.585	8.500	17.000	0.0
104	150.325	81.692	17.000	0.0
105	130.248	81.692	17.000	0.0

Workplane (Room 1) / Perpendicular illuminance (adaptive)



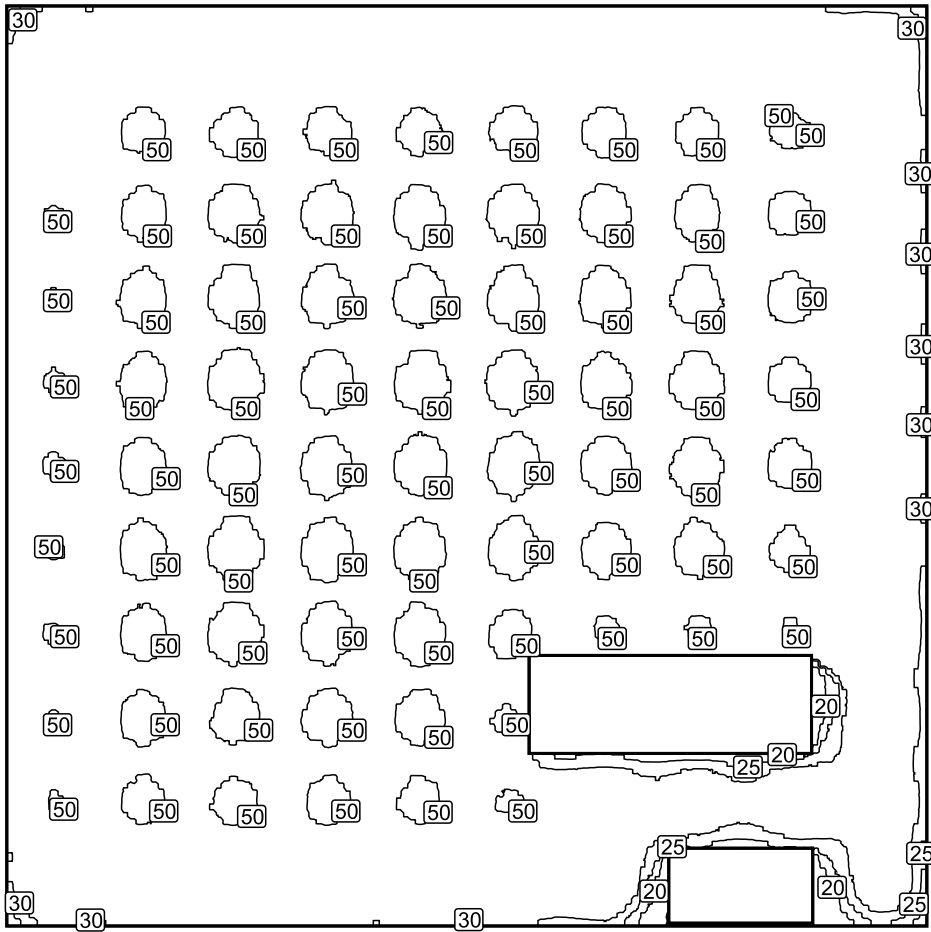
Workplane (Room 1): Perpendicular illuminance (adaptive) (Surface)

Light scene: Light scene 1

Average: 44.9 fc (Target: ≥ 27.9 fc), Min: 0.34 fc, Max: 55.8 fc, Mean/Min: 134, Max/Min: 166

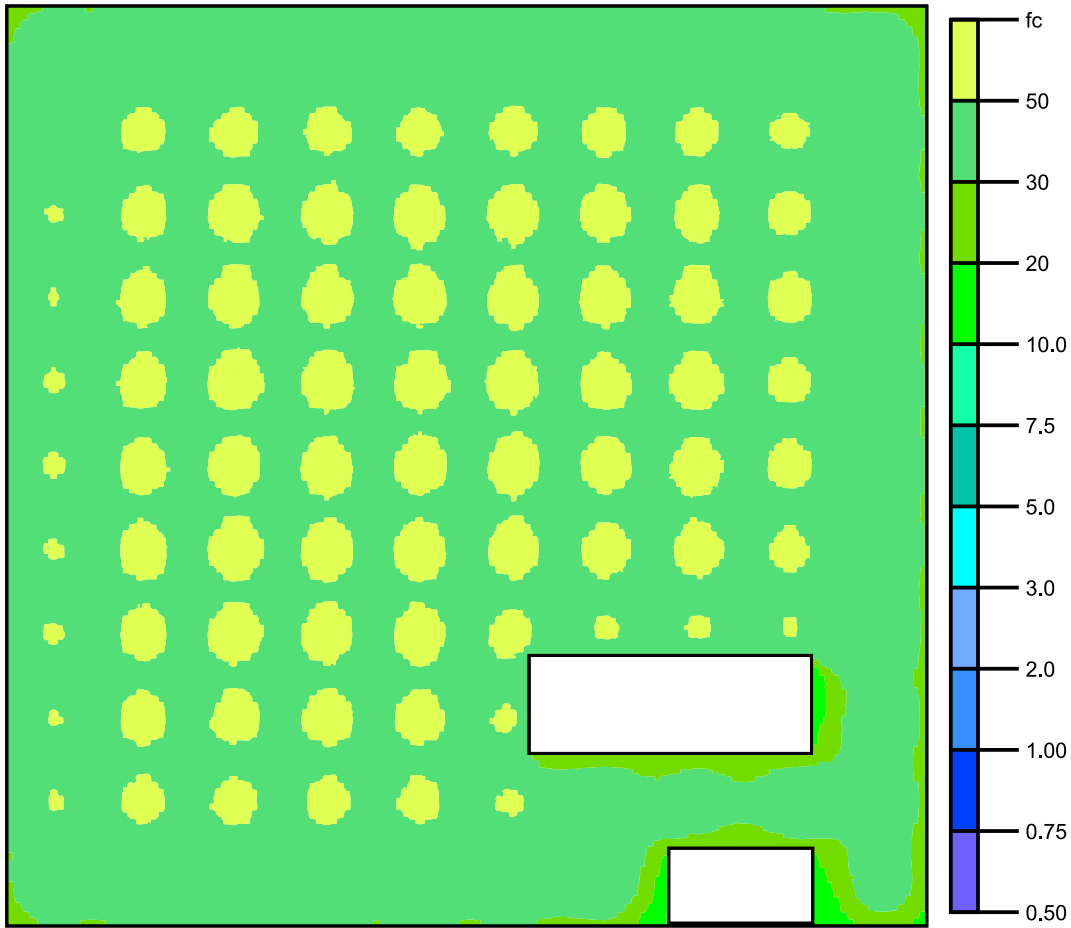
Height: 2.493 ft, Wall zone: 0.000 ft

Isolines [fc]



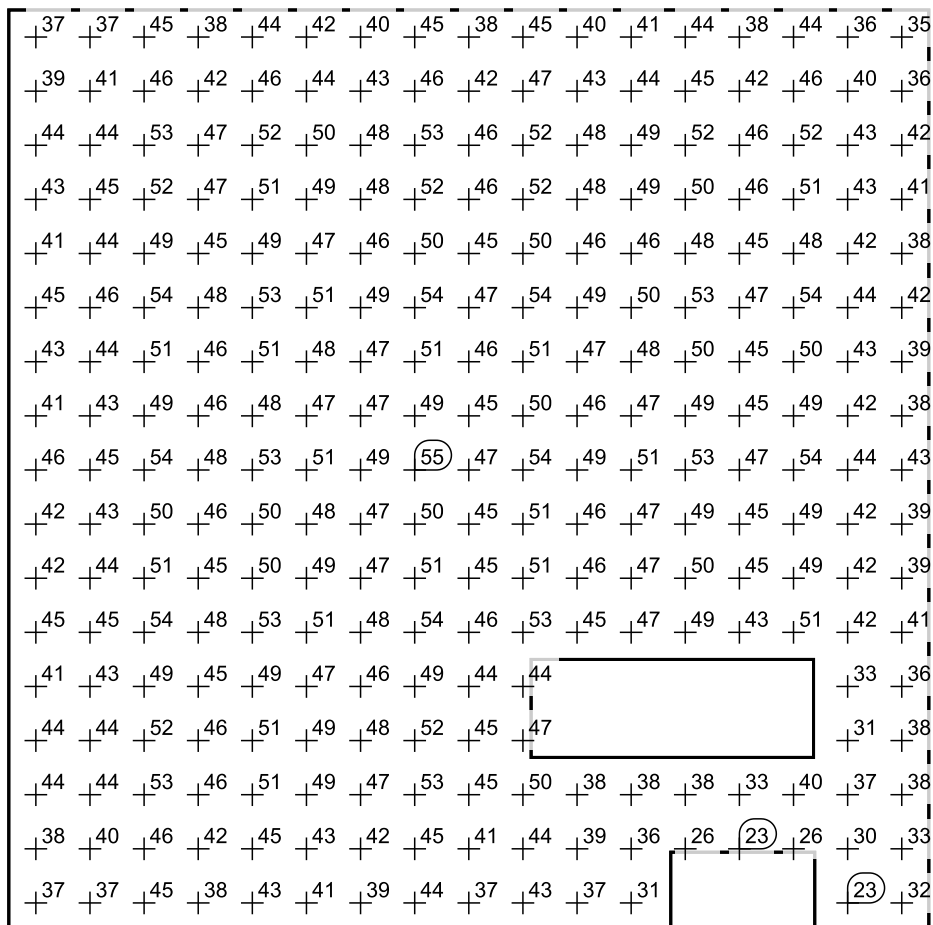
Scale: 1 : 500

False colors [fc]



Scale: 1 : 500

Value grid [fc]



Scale: 1 : 500