



LISTED
E504582

TM

Conform to Standards UL962



LED VANITY MIRRORS

WHY KRUT LED MIRRORS?

**RELIABLE
CERTIFIED
MAINTANCE FREE**

KRUTLED® always strives to bring in innovative and best quality products in the market, by only manufacturing/ distributing certified lights. We are committed to make retrofit and new installation simple and worry free.

KRUT LED® designs and develops new state of the art & best in class products for particular segments and get them patented.

KRUT LED® has a 30,000 sq ft. distribution warehouse in Anderson, SC and employs 15 people both directly and indirectly. We strive to carry most efficient LED lights for more savings of energy. We have over 1000 products DLC and Energy Star Certified under our brand name "KRUTLED", and enjoy having over 5000 satisfied customers spread across the states of SC/NC/GA/TN/VA/OH/KY/IN/FL.

OUR COMMITMENT TO YOU

"Our commitment is towards providing unique and high quality lighting solutions to our customers with our broad spectrum of products. Continuous analysis of the customer needs and contributing towards their different needs helps us to introduce new products with the latest lighting technologies and designs. We strive to deliver certified and high quality / long-lasting products with competitive pricing. We are focused on providing best in class customer service with a team of highly experienced lighting professionals.

Our sales and technical teams are committed to delivery of the best and most innovative lighting products for our customers."

TABLE OF CONTENTS



Page 1



Page 2



Page 4



Page 3



Page 5



Page 6



OUR OTHER PRODUCTS
Page 8

Page 7



LED BACK-LIT VANITY MIRRORS

IN STOCK



Indoors



Wood
Concrete
Plaster



Anti-fog



Hard-wired

ITEM CODE KL-VMLXXXX

Input 100-277V AC, 50/60Hz

5mm silvering glass mirror, condensation-free pencil polished edges, chamfered corners

Uses standard tubes

Full size shatter proof film

60mm sandblasted border, fingerprint protection

Anti-Rust Ecological (copper-free)

Anti-sliding knobs

Fog-less

IP20 rated/Wet listed

Extruded aluminum chassis in white coating, strengthened corner joints

Cross mounting bar suitable for landscape or portrait installation

2ft (61cm) lead cable with metal conduit for mains power connection

Sizes

Model Number	Mirror Dimension (in)	Wattage	Tubes Needed	Stock
KL-VML3042	30X42	50W	(2) 2' tubes (2) 3" tubes	In Stock
KL-VML3048	30X48	56W	(2) 2' tubes (2) 42" tubes	Special Order
KL-VML3054	30X54	56W	(2) 2' tubes (2) 4' tubes	In Stock
KL-VML3636	36X36	60W	(4) 30" tubes	In Stock
KL-VML3648	36X48	66W	(2) 30" tubes (2) 42" tubes	Special Order
KL-VML3654	36X54	66W	(2) 30" tubes (2) 4' tubes	Special Order
KL-VML4242	42X42	60W	(4) 3' tubes	In Stock
KL-VML4254	42X54	66W	(2) 3' tubes (2) 4' tubes	In Stock
KL-VML4848	48X48	72W	(4) 42" tubes	Special Order
KL-VML5454	54X54	72W	(4) 4' tubes	Special Order

LED VERTICAL LIGHTED MIRROR

IN STOCK



ITEM CODE KL2-VMLXXXX

Input 100-277V AC, 50/60Hz

Condensation-free glass mirror panel, pencil polished edges, chamfered corners

Full size shatter proof film

Anti-Rust Ecological (copper-free)

Extruded aluminum chassis,

IP20 rated



Anti-fog



Hard-wired

Available Sizes

24" X 36" X 2.75"

30" X 40" X 2.75"

60mm wide Sandblasted Border having Finger Print Proof treatment

IN STOCK



LED SANDBLASTED HALO MIRROR



Size

35.5" X 27.5" X 1.80"

ITEM CODE KLSM3015

Input 110-240V AC, 50/60Hz

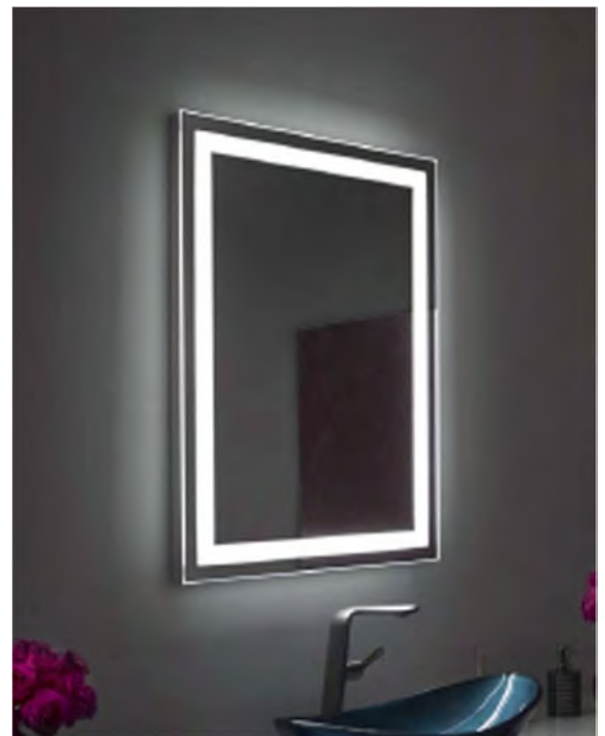
5mm condensation-free glass mirror panel, pencil polished edges, chamfered corners

Sandblasted perimeter for even and soft lighting

Full size shatter proof film

Anti-Rust Ecological (copper-free)

Extruded aluminum chassis, cleats for easy installation



LED ROUND SANDBLASTED MIRROR

LED Round Mirror, Clear Acrylic Diffuser,
Dual-Color Temperatures, With Heated Defogger



Anti-fog



Hard-wired

Item code KLRM3011

Input Voltage 120V AC, 50/60Hz

Diameter 23.6"

**LED lighting source in
dual-color temperatures**
Warm white and cool white

**4mm silvering glass mirror
backed with shatter-proof film,
clear acrylic diffuser with bevel**



Indoors



DAMP
LOCATION



WALL
MOUNT

Wood
Concrete
Plaster

**Touch sensor switch with white /
blue background lighting to control
LED lighting: 1st touch 6000K, 2nd
touch 3,000K, 3rd touch lighting off**

Heated defogger with separate sensor switch

Metal chassis in white finish, anti-sliding hanger for easy installation

2ft (61cm) lead cable for mains power connection

Mounting accessories attached, mini bubble level included

LED BIRD PATTERN SANDBLASTED MIRROR



Anti-fog



Hard-wired

Item code KLSM3043-Birds

Input 110-240V AC, 50/60Hz

Size 31.5" X 19.6"

5mm silvering glass mirror panel

Pencil polished edges

Chamfered corners

Backed by shatter-proof film

Sandblasted birds pattern

**Coherent lighting emitted from
sandblasted glass mirror**

2' lead cable for power connection

Anti-Rust Ecological (copper-free) Aluminum composite board back cover

**Aluminum chassis in white finish, anti-sliding key-hole slots cleats for easy
installation**

IP20 rated



Indoors



Wood
Concrete
Plaster

LED MIRROR WITH WOOD FINISH FRAME



Item code KLSM3303

Input Voltage: 120V AC, 50/60Hz

Size 19.6" X 27.5" X 1.2"

**5mm silvering glass mirror, condensation-free,
50mm sandblasted insert, finger-print protection,
backed with shatter-proof film**

LED lighting source in warm or cool white lighting

Metal chassis in white coating

**ON/OFF sensor switch with white / blue background
lighting**

Lead cable for easy mains power connection

**Mounting accessories attached, mini bubble
level included**

Item code KLSM3302

IP 44 Rated

Input Voltage: 120V AC, 50/60Hz

Diameter 25.6"

**5mm silvering glass mirror, condensation-free,
50mm sandblasted insert, finger-print protection,
backed with shatter-proof film**

LED lighting source in warm or cool white lighting

Metal chassis in white coating

**ON/OFF sensor switch with white / blue background
lighting**

Lead cable for easy mains power connection

Mounting accessories attached, mini bubble level included



LED MIRROR WITH TOP SANDBLASTED BAND & BLUETOOTH



Anti-fog



Hard-wired

Item code KLSM7001

Input 120V AC, 50/60Hz

Size 27.5" X 23.6" X 1.2"

5mm silvering glass mirror panel

Pencil polished edges

Chamfered corners

Backed by shatter-proof film

60mm top sandblasted band

Integrated with bluetooth, radio, clock and temperature

Finger-print protection

Coherent lighting emitted from sandblasted glass mirror

Lead cable for power connection

Aluminum chassis in white finish, cleats for easy installation

Mounting accessories attached, mini bubble level included

SOME OF OUR OTHER PRODUCT LINES



Sconce up/down



Single/double ring puff lights



Ceiling Fixtures

Decorative Lighting



Hanging or flush mount pendant lights



Post top Lights



Flood Lights



Parking lot Lights



Ceiling down lights

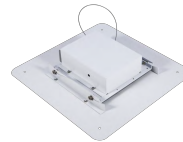
Commercial Lighting



Semi-cutoff wallpacks



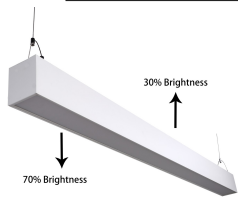
Canopy Lights



Soffit Lights



Mini Wallpacks



Up & down or down only strip light



Panel lights



Hanging/flush mount strip lights



Batten Lights

Linear Lighting



Prismatic Lights



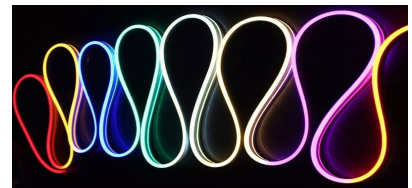
Vanity Fixture Lights



Hanging or flush mount strip light

Coming Soon

Flex strips for building top, corridors, under cabinets & more in **any color.**



THE BRIGHTEST MINDS IN THE LIGHTING BUSINESS

