



KRUT LED®

Product Catalog

2019

OUR COMPANY STORY

Dr. Ish Patel, an Electrical Engineer, founded KRUT LED® in 2013. Since the inception of the company 7 years ago, KRUTLED® always strives to bring in innovative and best quality products in the market. KRUTLED® only manufactures/ distribute UL/ETL certified lights and committed to make retrofit and new installation simple and worry free. KRUT LED® designs and develop new state of the art and best in class products for particular segment and get them patented. KRUT LED® annual turnover was over 3M in 2018 and is growing rapidly. KRUT LED® has a 30,000 sq ft. distribution warehouse in Anderson, SC and employs 15 people both directly and indirectly.

At KRUT LED® we strive to carry most efficient LED lights for more savings of energy. KRUT LED® had over 1000 products DLC and Energy Star Certified under its brand name “KRUTLED”. KRUT LED® also enjoys over 3000 satisfied customers spread across the states of SC/NC/GA/TN/VA/OH/KY/IN/FL. KRUT LED® is partnered with Duke Energy, SCE&G, BGE, Georgia Power, AEP for providing rebate benefits to our customers.

OUR COMMITMENT TO YOU

“Our commitment is towards providing unique and high quality lighting solutions to our customers with our broad spectrum of products. Continuous analysis of the customer needs and contributing towards their different needs helps us to introduce new products with the latest lighting technologies and designs. We strive to deliver certified and high quality / long-lasting products with competitive pricing. We are focused on providing best in class customer service with a team of highly experienced lighting professionals.

Our sales and technical teams are committed to delivery of the best and most innovative lighting products for our customers.”

LED INTERIOR LIGHTING

LED HIGHBAY



UFO Style 2-3



Linear Style 4-5

LED LAY-IN FIXTURES

LED Panel 6

Back-lit Panel
Edge-lit Panel

LED Troffer 7

LED LINEAR FIXTURES

LED Tube Fixtures 8

LED Wraparound 8

LED Strip Down only 9-10
LED Stripe Up/Down Light

LED Vapor Tight Light 10

LED Batten Light 11

LED Architectural Light 12

LED TUBES

LED Tubes 13

LED T5 Tubes 13

LED Single-Pin Tubes 13

LED HO Tubes 14

LED COOLER LIGHTS

Cooler Door Light 14

LED BULBS



All Bulb 15

LED DOWN LIGHTS



Down light with J-Box 16



Round/Square Down Light 17



Gum-Ball Down Light 17



Internal Driver Flat Panel 18



External Driver Flat Panel 18

LED EXTERIOR LIGHTING

LED AREA LIGHT



Parking Lot Light 20



All Mounting Options 21



LED Post Top Light 21

LED CANOPY LIGHTS



Slim Canopy 22



Round Canopy 22



Square Canopy 23



23" External Driver Plate
Canopy 23



LED Soffit Canopy 24

LED WALLPACK LIGHTS



Mini Wallpacks 25



Semi Cut-Off Wallpack 26



Full Cut-Off Wallpack 27

LED FLOOD LIGHT



Flood Lights 27

LED SCENCE LIGHT



UP/DOWN or only DOWN
Wall Sconce Light 28

LED BARN AND GOOSENECK LIGHT



LED Barn Light 29



LED Gooseneck Light 30

LED RETROFIT KITS



LED Retro Light 31

ALL CORN LAMPS

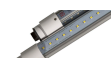


All Corn Lamps 31-32

LED SIGNS AND SIGN TUBES



LED Gas Price Changers 34



LED Sign Tubes
Generation 1 35



LED Sign Tubes
Generation 2 35



LED Digital Signs 36-37

LED BACK-LIT MIRRORS



Variety Sizes of LED
Mirrors 39-40

LED SPORTS FIELD LIGHTING



All Sport Field Lights 42-43



Exterior Highbay 44

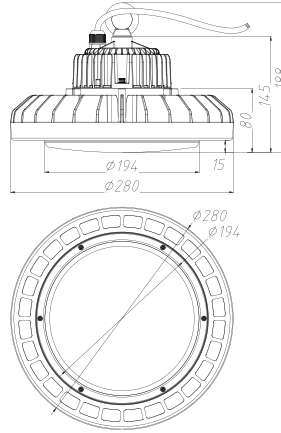
COMING SOON 45

UFO HIGHBAYS

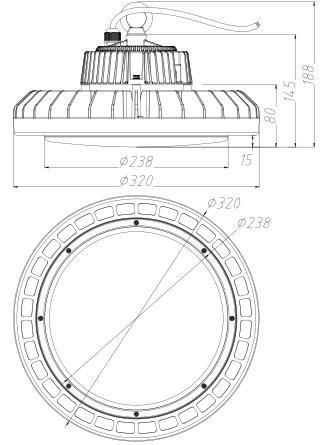
DIMENSIONS



100W/150W



200W



130LM/W

100W

Power 100W
Lumen output 13000LM
Input Voltage 100-277V

150W

Power 150W
Lumen output 19500LM
Input Voltage 100-277V

200W

Power 200W
Lumen output 26000LM
Input Voltage 100-277V

165LM/W

Power 100W
Lumen output 16500LM
Input Voltage 100-277V

Power 150W
Lumen output 24750LM
Input Voltage 100-277V

Power 200W
Lumen output 33000LM
Input Voltage 100-277V

180LM/W

Power 100W
Lumen output 20000LM
Input Voltage 100-277V

Power 150W
Lumen output 27000LM
Input Voltage 100-277V

Power 200W
Lumen output 36000LM
Input Voltage 100-277V

THREE DIFFERENT LUMEN OUTPUT OPTIONS

AREAS OF APPLICATION



Warehouse



Hall



Factories



Sport field

UFO HIGH TEMP 65C HIGHBAY



150W

Dimension 14.4" x 7.1"
Power 150W
Lumen output 21000LM
Input Voltage 100-277V

200W

Dimension 15.7" x 7.8"
Power 200W
Lumen output 28000LM
Input Voltage 100-277V

260W

Dimension 15.7" x 7.8"
Power 260W
Lumen output 36400LM
Input Voltage 100-277V

UFO FOOD SAFE HIGHBAYS

Power 100W
Lumen output 12880LM
Input Voltage 100-277V

100W

Power 150W
Lumen output 19320LM
Input Voltage 100-277V

150W

Power 200W
Lumen output 25760LM
Input Voltage 100-277V

200W



LINEAR HIGH LUMEN HIGHBAY



100W	Power 100W Lumen output 16000LM Input Voltage 100-277V	2'
165W	Power 165W Lumen output 26400LM Input Voltage 100-277V	2'
200W	Power 200W Lumen output 32000LM Input Voltage 100-277V	4'

LINEAR MAGIC LINE HIGHBAY

Power 100W
Lumen output 13000LM
Input Voltage 100-277V

100W

Power 120W
Lumen output 15000LM
Input Voltage 100-277V

120W

Power 150W
Lumen output 19500LM
Input Voltage 100-277V

150W

Power 180W
Lumen output 23400LM
Input Voltage 100-277V

180W

Power 200W
Lumen output 26000LM
Input Voltage 100-277V

200W

Power 240W
Lumen output 31000LM
Input Voltage 100-277V

240W



300W Power 300W
Lumen output 39000LM
Input Voltage 100-277V

400W Power 400W
Lumen output 52000LM
Input Voltage 100-277V

600W Power 600W
Lumen output 78000LM
Input Voltage 100-277V

LINEAR SKY LINE HIGHBAY



100W	Power 100W Lumen output 13000LM Input Voltage 100-277V
150W	Power 150W Lumen output 19500LM Input Voltage 100-277V
200W	Power 200W Lumen output 26000LM Input Voltage 100-277V
320W	Power 320W Lumen output 41600 Input Voltage 100-277V

LINEAR STRIP HIGHBAY

Power 100W
Lumen output 12000LM
Input Voltage 100-277V

100W

Power 150W
Lumen output 17500LM
Input Voltage 100-277V

150W

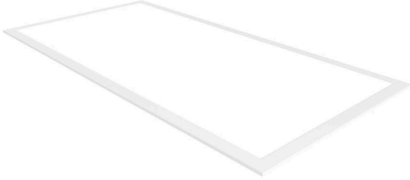
Power 200W
Lumen output 24000LM
Input Voltage 100-277V

200W



LED PANELS

BACK-LIT PANELS



1' x 4'

Model No. KLBP1-40W-XXXX
Dimension 1X4 BACK-LIT PANEL
Power 40W
Lumen output 4200/5000LM
Input Voltage 100-277V

2' x 2'

Model No. KLBP4-40W-XXXX
Dimension 2X2 BACK-LIT PANEL
Power 40W
Lumen output 4200/5000LM
Input Voltage 100-277V

2' x 4'

Model No. KLBP7-50W-XXXX
Dimension 2X4 BACK-LIT PANEL
Power 50W
Lumen output 5250/6250LM
Input Voltage 100-277V

EDGE-LIT PANELS



1' x 4'

Model No. KLB32PLXX14-P
Dimension 1X4 EDGE-LIT PANEL
Power 32W
Lumen output 3220/1460LM
Input Voltage 100-277V

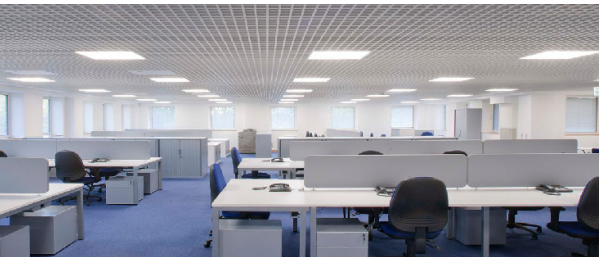
2' x 2'

Model No. KLB32PLDXX22-P
Dimension 2X2 EDGE-LIT PANEL
Power 32W
Lumen output 3125LM
Input Voltage 100-277V

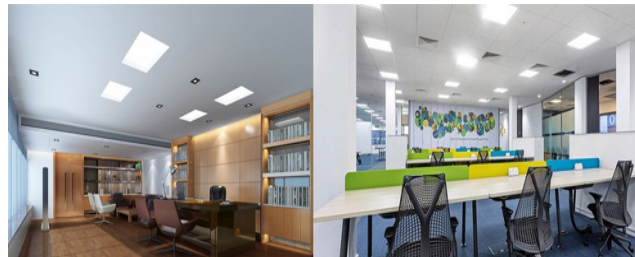
2' x 4'

Model No. KLB50PLDXX24-P
Dimension 2X4 EDGE-LIT PANEL
Power 50W
Lumen output 6250LM
Input Voltage 100-277V

EDGE-LIT



BACK-LIT



LED TROFFERS



2' x 4'

Model No. KLBR50TRFXX24
Dimension 2X4 TROFFER
Power 50W
Lumen output 5220
Input Voltage 100-277V



2' x 2'

Model No. KLBR40TRFXX22
Dimension 2X2 TROFFER
Power 40W
Lumen output 4200LM
Input Voltage 100-277V

APPLICATION



LED TUBE FIXTURES



8'

Model No. KLHF60T8XX8F
Dimension 1.3"W x 1.38"H
Power 60W
Lumen output 8400LM
Input Voltage 100-277V

6'

Model No. KLHF48T8XX6F
Dimension 1.3"W x 1.38"H
Power 48W
Lumen output 6720LM
Input Voltage 100-277V

5'

Model No. KLHF40T8XX5F
Dimension 1.3"W x 1.38"H
Power 40W
Lumen output 5600LM
Input Voltage 100-277V

4'

Model No. KLHF24T8XX4F
Dimension 1.3"W x 1.38"H
Power 24W
Lumen output 3360LM
Input Voltage 100-277V

LED WRAPAROUND



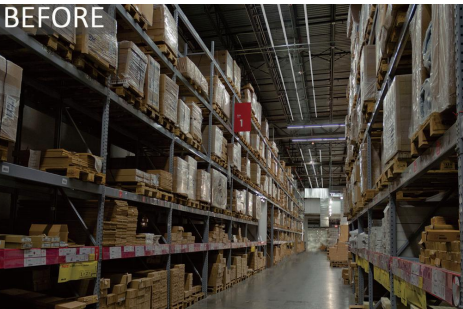
4'

Model No. KLBR48WRXX4F
Dimension 5.5" W x 48" L x 1.6" H
Power 48W
Lumen output 4000LM
Input Voltage 100-277V

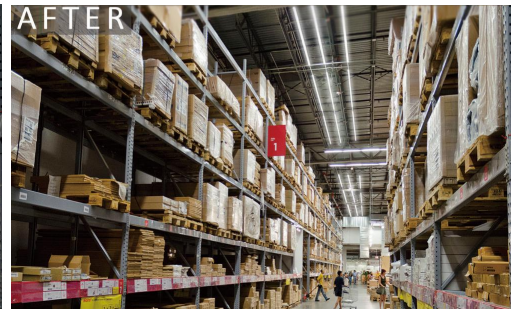
2'

Model No. KLBR25WRXX2F
Dimension 5.5" W x 24" L x 1.6" H
Power 25W
Lumen output 2500LM
Input Voltage 120V

BEFORE



AFTER





LED STRIP LIGHT



Black

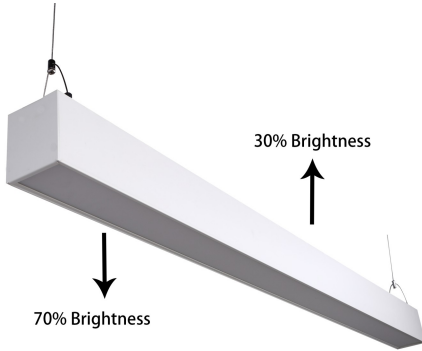
Grey

White



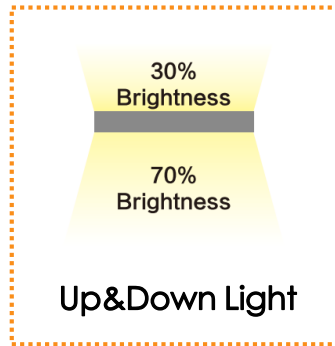
DOWN ONLY LIGHT

Model No. KLHF60T8XX8F
Dimension 1.3"W x 1.38"H **Power** 60W
Lumen output 8400LM
Input Voltage 100-277V

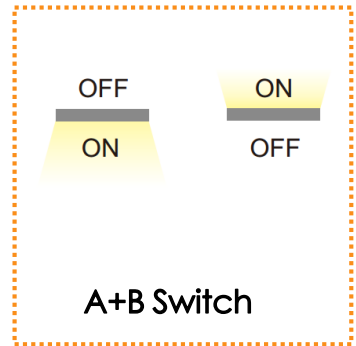


UP/DOWN LIGHT

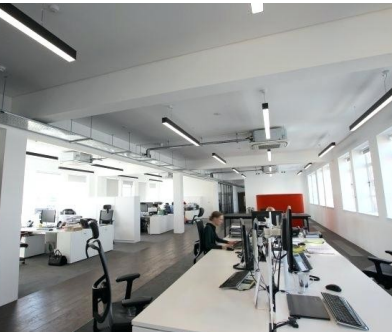
Model No. KLHF60T8XX8F
Dimension 1.3"W x 1.38"H **Power** 60W
Lumen output 8400LM
Input Voltage 100-277V



Up&Down Light



A+B Switch



LED STRIP LIGHT



DECORATIVE END CAPS AVAILABLE IN BRONZE AND SILVER

2'

Model No. KLBR25STPXX24
Dimension 5"W x 3.28"H x 24"L
Power 25W
Lumen output 2600LM
Input Voltage 100-277V

3'

Model No. KLBR30STPXX36
Dimension 5.3"W x 3.7"H x 36.6"L
Power 30W
Lumen output 3100LM
Input Voltage 100-277V

4'

Model No. KLBR40STPXX48
Dimension 5"W x 3.28"H x 48"L
Power 40W
Lumen output 4200LM
Input Voltage 100-277V

8'

Model No. KLBR104STPXX96
Dimension 5"W x 3.28"H x 96"L
Power 104W
Lumen output 10400LM
Input Voltage 100-277V

LED VAPOR TIGHT LIGHT

**INDOOR/OUTDOOR APPLICATION
IP65 RATING**

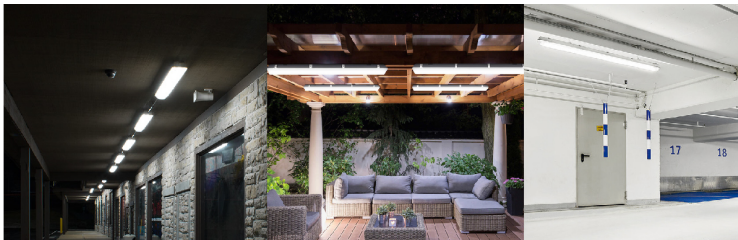


2'

Model No. KLBR20VTFXX2F
Dimension 22"L x 4.75"W x 4.25"H
Power 20W
Lumen output 2200LM
Input Voltage 100-277V

4'

Model No. KLBR40VTFXX4F
Dimension 46"L x 4.75"W x 4.25"H
Power 40W
Lumen output 4400LM
Input Voltage 100-277V



APPLICATION



LED BATTEN LIGHT



2'

Model No. MC-BA-20D
Dimension 24"L
Power 20W
Lumen output 2200LM
Input Voltage 100-277V

3'

Model No. MC-BA-30D
Dimension 36"L
Power 30W
Lumen output 3300LM
Input Voltage 100-277V

4'

Model No. MC-BA-40D
Dimension 48"L
Power 40W
Lumen output 4400LM
Input Voltage 100-277V

APPLICATION



ARCHITECTURAL LIGHTING

LED BLADE LIGHT

BLACK, WHITE & WOOD GRAIN OPTIONS



30W

Power 30W
Lumen output 1800LM
Input Voltage 100-277V

45W

Power 45W
Lumen output 2700LM
Input Voltage 100-277V

3' & 5' OPTION

LED DOWN LIGHT BRIGHT MOON



60W

65W

80W

90W

LED DOWN LIGHT FLOAT



WHITE, BLACK & SILVER OPTIONS

LED TUBES



2'

Model No. KLBR10T8XX2F
Dimension 24"L
Power 10W
Lumen output 1200LM
Input Voltage 100-277V

3'

Model No. KLBR15T8XX3F
Dimension 36"L
Power 15W
Lumen output 1800LM
Input Voltage 100-277V

4'

Model No. KLBR18T8XX4F
Dimension 48"L
Power 18W
Lumen output 2160LM
Input Voltage 100-277V

8'

Model No. KLBR40T8XX8F
Dimension 96"L
Power 40W
Lumen output 4800LM
Input Voltage 100-277V

LED T5 TUBES



4'

Model No. KLCH25.5T5XX4F-HO
Dimension 48"L
Power 25.5W
Lumen output 3200-3300LM
Input Voltage 100-277V

LED SINGLE-PIN TUBES



8'

Model No. KLBR40T8XX8F-G13
Dimension 96"L
Power 40W
Lumen output 4800LM
Input Voltage 100-277V

LED HO ROTATING ENDS TUBE



8'

Model No. KLBR40T8XX8F-R17D
Dimension 96"L
Power 40W
Lumen output 4800LM
Input Voltage 100-277V

LED COOLER DOOR LIGHTS



4'

Model No. KLH30RT85K4FI
Dimension 48"L
Power 30W
Lumen output 3600LM
Input Voltage 100-277V

5'

Model No. KLH40RT85K5FI
Dimension 60"L
Power 40W
Lumen output 4800LM
Input Voltage 100-277V

6'

Model No. KLH48RT85K6FI
Dimension 72"L
Power 48W
Lumen output 5760LM
Input Voltage 100-277V



LED BULBS

Model No. KL-A19-9.5YYZCCTP
Power 9.5W
Lumen output 900LM
Input Voltage 100-277V

Model No. KL-A19-11YYZCCTP
Power 11W
Lumen output 1100LM
Input Voltage 100-277V

**A19
BULBS**



**GU
BULB**

Model No. KL-GU10-06YYZCCTP
Power 6.5W
Lumen output 500LM
Input Voltage 100-277V

Model No. KL-B11-06YYZCCTP
Power 6W
Lumen output 1600LM
Input Voltage 100-277V

**CANDLE
BULB**



**BR
BULBS**

Model No. KL-BR20-XXYYZCCTP
Power 6.5W
Lumen output 480LM
Input Voltage 100-277V

BR 20

Model No. KL-BR30-XXYYZCCTP
Power 11W
Lumen output 800LM
Input Voltage 100-277V

BR 30

Model No. KL-BR40-XXYYZCCTP
Power 14W
Lumen output 1090LM
Input Voltage 100-277V

BR 40

PAR 20

Model No. KL-PAR20-XXYYZCCTP
Power 6W
Lumen output 450LM
Input Voltage 100-277V

PAR 30

Model No. KL-PAR30-XXYYZCCTP
Power 11W
Lumen output 825LM
Input Voltage 100-277V

PAR 38

Model No. KL-PAR38-XXYYZCCTP
Power 15W
Lumen output 1200LM
Input Voltage 100-277V

**PAR
BULBS**



OTHER BULBS NOT LISTED HERE ALSO AVAILABLE

LED DOWN LIGHT WITH J-BOX



4"

Model No. D404-N-KT-XXXX
Power 10W
Lumen output 700-800LM
Input Voltage 100-277V
Dimension Ø5" x 4"H



6"

Model No. D316-N-XXXX
Power 13W
Lumen output 1000-1150M
Input Voltage 120V
Dimension Ø7.7" x 4.5"H

Model No. D404-N-KT-XXXX
Power 10W
Lumen output 700-800LM
Input Voltage 100-277V
Dimension Ø5" x 4"H

8"



Model No. D316-N-XXXX
Power 13W
Lumen output 1000-1150M
Input Voltage 120V
Dimension Ø7.7" x 4.5"H

10"



LED ROUND & SQUARE DOWN LIGHT

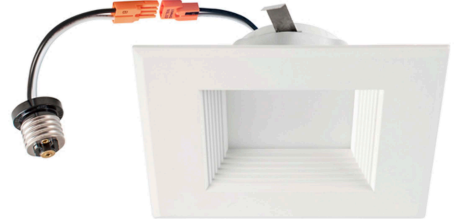


4"

Model No. KL09DLXX4I
Power 9W
Lumen output 720-820LM
Dimension Ø5" x 3.2"H

6"

Model No. KL13DLXX6I
Power 13W
Lumen output 1000-1100M
Dimension Ø7.5" x 3.4"H



4"

Model No. D724-90-XXXX
Dimension 5"L x 5" W x 1.8"H
Power 9W
Lumen output 600LM

6"

Model No. D726-90-XXXX
Dimension 7.3"L x 7.3" W x 0.5"H
Power 12W
Lumen output 950LM

LED GUM-BALL DOWN LIGHT

Model No. D504-90-XXXX
Dimension Ø5.4" x 3.0"H
Power 10W
Lumen output 700-740LM

4"

Model No. D506-90-XXXX
Dimension Ø7.7"L x 3.0"H
Power 10/15W
Lumen output 700-740/1050-1100LM

6"



LED INTERNAL DRIVER FLAT PANEL



4"

Model No. KLBR06FDLXX4I
Dimension Ø5.3" x 0.5"H
Power 6W
Lumen output 500LM



6"

Model No. KLBR12FDLXX6I
Dimension Ø7" x 0.5"H
Power 12W
Lumen output 960LM



8"

Model No. KLBR18FDLXX8I
Dimension Ø8.8" x 0.5"H
Power 18W
Lumen output 1530LM



10"

Model No. KLBR24FDLXX10I
Dimension Ø11.8" x 0.5"H
Power 24W
Lumen output 2160LM

LED EXTERNAL DRIVER FLAT PANEL

Model No. KLBR09FDLXX4I
Dimension Ø4.7" x 0.5"H
Power 9W
Lumen output 700LM

4"

Model No. KLBR12FDLXX6I
Dimension Ø6.8" x 0.5"H
Power 12W
Lumen output 1050LM

6"

Model No. KLBR20FDLXX8I
Dimension Ø8.7" x 0.5"H
Power 20W
Lumen output 1350LM

8"



EXTERIOR LIGHTS



LED PARKING LOT LIGHTS

BLACK/WHITE/BRONZE COLOR OPTIONS
 PHOTOCELL/NON-PHOTOCELL OPTION
 HIGH/LOW VOLTAGE OPTION
 ALL OPTIONS IN STOCK



80W/100/150W

Model No. KLBR80SB-X-XX
Dimension 13.4" x 15.4" x 3.15"
Power 80W
Lumen output 10000LM

Model No. KLBR150SB-X-XX
Dimension 13.4" x 15.4" x 3.15"
Power 100W
Lumen output 12500LM

Model No. KLBR150SB-X-XX
Dimension 13.4" x 15.4" x 3.15"
Power 150W
Lumen output 18750LM



200/240W

Model No. KLBR200SB-X-XX
Dimension 21.3" x 15.4" x 3.15"
Power 200W
Lumen output 25000LM

Model No. KLBR240SB-X-XX
Dimension 21.3" x 15.4" x 3.15"
Power 240W
Lumen output 30000LM



300W

Model No. KLBR300SB-X-XX
Dimension 25.2" x 15.4" x 3.15"
Power 300W
Lumen output 37500LM



450W

Model No. KLAST450WSBXX
Dimension 36" x 13.3" x 3.7"
Power 450W
Lumen output 54000-607500LM

LED PARKING LOT LIGHT MOUNTING OPTIONS

Accessories

Photocell Options:



Photocell



Shorting Cap

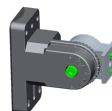
Mounting Adaptor Options:



Type S
Street Pole



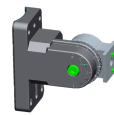
Type A
Slip Fitter



Type G
Square pole



Type C Trunnion



Type H
Round Pole

APPLICATION



LED POST TOP LIGHT

Model No. KL75SGFXX
Dimension 25.5" x 17.5"
Power 75W
Lumen output 8429LM

75W

ALSO AVAILABLE IN OTHER WATTAGES



LED SLIM CANOPY LIGHT



130W

Model No. KL130CPXX-SLIM

Dimension 15" x 15" x 2.8"

Power 130W

Lumen output 16900LM

LED ROUND CANOPY LIGHT

Model No. KLBR40W277CXX

Dimension Ø11.4" x 3.13"H

Power 40W

Lumen output 5200LM

40W

Model No. KLBR80W277CXX

Dimension Ø11.4" x 3.13"H

Power 80W

Lumen output 10400LM

80W



APPLICATION



LED SQUARE CANOPY LIGHT



55W

Model No. KLSN55CPXX-LYRA1
Dimension 8.9"L x 8.9"W x 4.5"H
Power 55W
Lumen output 6900-7450LM

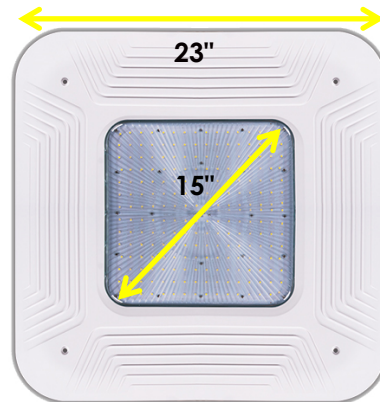
75W

Model No. KLSN75CPXX-LYRA1
Dimension 10"L x 10"W x 6.1"H
Power 75W
Lumen output 9400-10000LM

LED 23" EXTERNAL DRIVER PLATE CANOPY

Model No. KL-CP-150W-H3-M2-N-XX
Input Voltage 100-277V
Power 150W
Lumen output 19000-20000LM

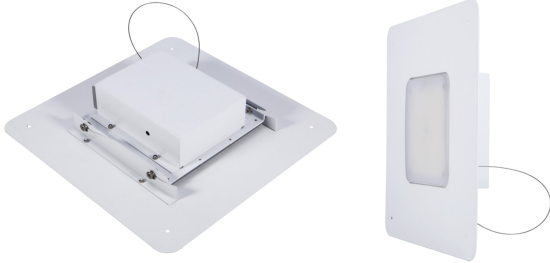
150W



JUNCTION BOX EQUIPPED



LED SOFFIT LIGHT



40W



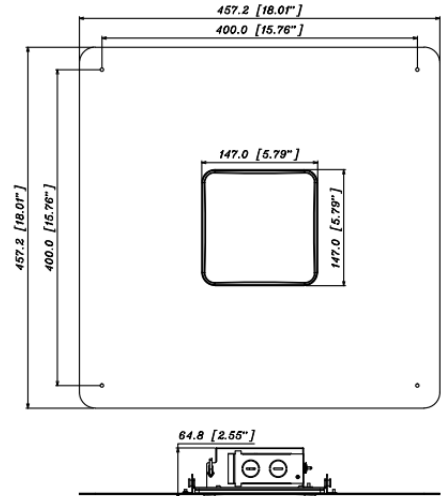
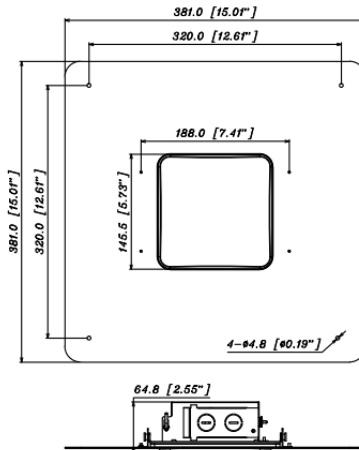
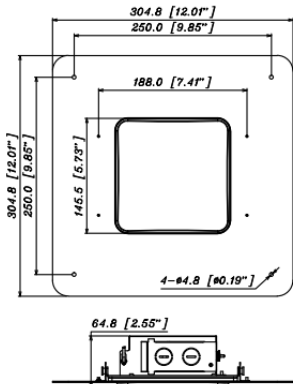
White Plate



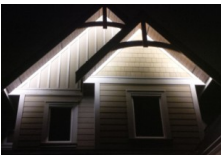
Bronze Plate

Model No. KL-SF-SERIES
Dimension Variety sizes
Power 40W
Lumen output 5600LM

SERIES SIZE OPTIONS



APPLICATIONS



Under Soffit



Gas Station



Enterway



LED MINI WALLPACK LIGHTS



9W

Model No. KLSN9WPXX
Dimension 8.6"L x 5.8"W x 2.9"H
Power 9W
Lumen output 940-1000LM

Model No. KLBR18WPXX
Dimension 9.1"L x 6.0"W x 3.6"H
Power 18W
Lumen output 2000LM

18W



APPLICATION

LED SEMI CUT-OFF WALLPACK LIGHTS



60W

Model No. KL60SWPXX-R
Dimension 14.2" x 9.3" x 7.6"
Power 60W
Lumen output 6600-7200LM

80W

Model No. KL80SWPXX-R
Dimension 14.2" x 9.3" x 7.7"
Power 80W
Lumen output 9200-10000LM

120W

Model No. KL120SWPXXA-4G
Dimension 18.1" x 9.8" x 8.8"
Power 120W
Lumen output 13800-15000LM

APPLICATION



LED FULL CUT-OFF WALLPACK LIGHTS



40W

Model No. KLSN40FWPXX-CT4A1
Voltage Input 100-277V
Power 40W
Lumen output 4400-4800LM

60W

Model No. KLSN60FWPXX-CT4A1
Voltage Input 100-277V
Power 60W
Lumen output 6900-7500LM

80W

Model No. KLSN80FWPXX-CT4A1
Input Voltage 100-277V
Power 80W
Lumen output 9200-10250LM

120W

Model No. KLSN120FWPXX-CT4A1
Input Voltage 100-277V
Power 120W
Lumen output 14400-15600LM

LED FLOOD LIGHTS



30W

Model No. KLSN30FLXX-CT1A1
Input Voltage 100-277V
Power 30W
Lumen output 3450-3750LM

50W

Model No. KLSN30FLXX-CT1A1
Input Voltage 100-277V
Power 50W
Lumen output 5750-6250LM

AVAILABLE MOUNTING OPTIONS



LED UP AND DOWN / UP OR DOWN ONLY SCONCE LIGHTS

AVAILABLE WATTAGES

One Direction

Two Directions



9W

12W

18W

20W

24W

30W

36W

9W X2 (18W total)

12W X2 (24W total)

18W X2 (36W total)

20W X2 (40W total)

24W X2 (48W total)

30W X2 (60W total)

36W X2 (72W total)



LED BARN LIGHTS



35W

Model No. KLBR35BNXX
Dimension Ø6.5" x 10.3" x 5.5"
Power 35W
Lumen output 3700LM

Model No. KLBR42BNXX
Dimension Ø10" x 13.8" x 5.2"
Power 42W
Lumen output 5250LM

42W

Model No. KLBR58BNXX
Dimension Ø10" x 13.8" x 5.2"
Power 58W
Lumen output 7250LM

58W



APPLICATION



LED GOOSE NECK LIGHT



35W

Model No. KLBR35BNXX
Dimension Ø6.5" x 10.3" x 5.5"
Power 35W
Lumen output 3700LM

Model No. KLBR42BNXX
Dimension Ø10" x 13.8" x 5.2"
Power 42W
Lumen output 5250LM

42W



BLACK



BRONZE



WHITE

COLOR OPTIONS

APPLICATION





LED RETROS



80W
Model No. KL80SRKPXX
Voltage Input 100-277 OR 200-480V
Power 80W
Lumen output 8000-10800LM

120W
Model No. KL120SRKPXX
Voltage Input 100-277 OR 200-480V
Power 120W
Lumen output 12000-16200LM

150W
Model No. KL150SRKXX
Input Voltage 100-277 OR 200-480V
Power 150W
Lumen output 14500-17200LM

240W
Model No. KL240SRKXX
Input Voltage 100-277 OR 200-480V
Power 240W
Lumen output 22000-28000LM

AVAILABLE IN HIGH VOLTAGE

LED CORN POST-TOP LAMPS



40W
Model No. KLSN40TCLXX-BLYA1E
Dimension Ø5.1" x 7.0"
Power 40W
Lumen output 4400-4800LM

LED CORN LAMPS

ALL CORN BULBS ARE AVAILABLE IN WATERPROOF AND NON-WATERPROOF OPTIONS



20W

Model No. KL20CRNXX
Dimension Ø3.6" x 7.1"
Power 20W
Lumen output 2150-2300LM

40W

Model No. KL40CRNXX
Dimension Ø3.6" x 10.2"
Power 40W
Lumen output 4300-4600LM

60W

Model No. KL60CRNXX
Dimension Ø3.6" x 10.2"
Power 60W
Lumen output 6400-6600LM

80W

Model No. KL80CRNXX
Dimension Ø4.9" x 10.6"
Power 80W
Lumen output 9000-9600LM

120W

Model No. KL120CRNXX
Dimension Ø4.9" x 12.2"
Power 120W
Lumen output 13500-14400LM

150W

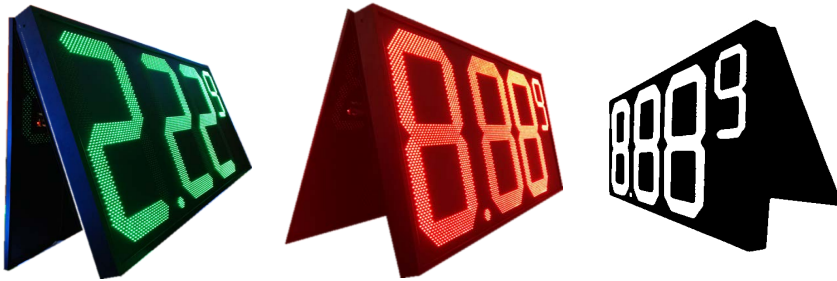
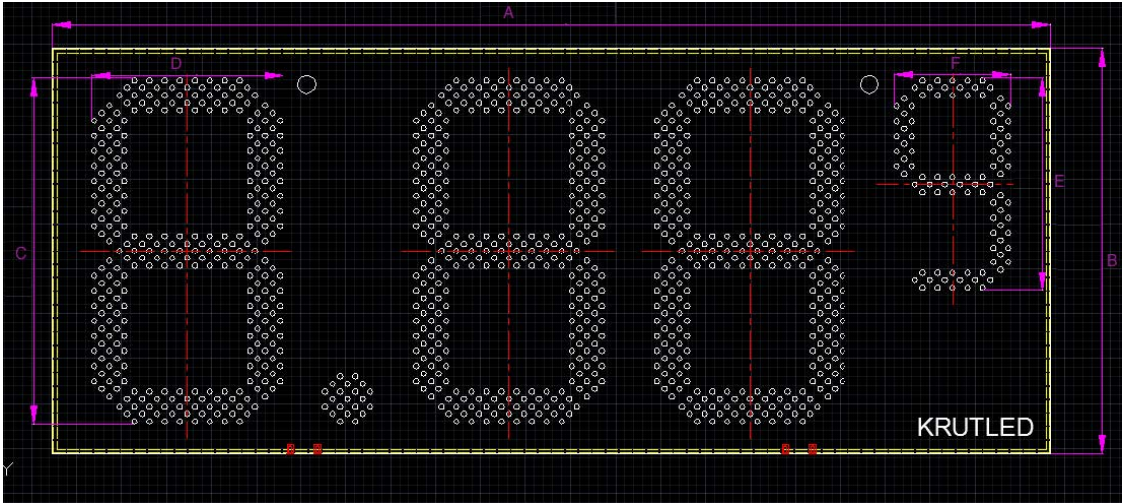
Model No. KL150CRNXX
Dimension Ø4.9" x 13.9"
Power 150W
Lumen output 16500-17400LM



LED SIGNS & SIGN TUBES



LED GAS PRICE CHANGER



GREEN, RED, WHITE COLOR OPTIONS

LED Quantity	Red		Green/White		Net Weight (per face)	
	Max Watt	Min. Intensity	Max Watt	Min. Intensity		
12"	534	33.2 W	2670 cd	48 W	4272 cd	27 lb
16"	1041	60.5 W	5205 cd	87.4 W	8328 cd	45 lb
18"	1146	66.2 W	5730 cd	97.4 W	9168 cd	54 lb
20"	1164	66.2 W	5820 cd	95.8 W	9312 cd	67 lb
24"	1959	113.4 W	9795 cd	159.6 W	15672 cd	95 lb
32"	2532	143.6 W	12660 cd	208 W	20256 cd	155 lb

LED SIGN TUBES

GENERATION 1



SIZES POWER LUMENS

SIZES	POWER	LUMENS
F18	7	910
F24	7	910
F30	16	910
F36	16	910
F42	21	2700
F48	21	2730
F60	28	3640
F64	28	3640
F72	38	4750
F84	38	4750
F96	51	6630
F108	51	6630
F117	60	8450
F120	60	8450

**PATENTED
PRODUCT**

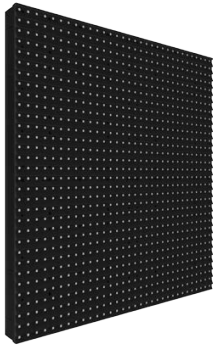
GENERATION



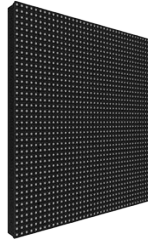
A COMPLETE GAME CHANGER!

Our patented LED Sign tubes offer better heat dissipation, more vibrant lighting, more durability and a significant cost savings over the life of your sign. Installation is easy. Simply cut the power, remove the old bulbs, cut the power leads to the existing ballast and remove the ballast entirely, insert our new patented tubes and connect them with the easy to use power cable, wire the proper power supply leads to the corresponding wires to the new power supply cable and close the sign case to finish your simple installation. Our revolutionary design enables you to spend less time on the sign installation and more time making sure your job is right the first time.

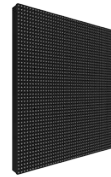
LED DIGITAL DISPLAYS



SMD 10mm



SMD 8mm



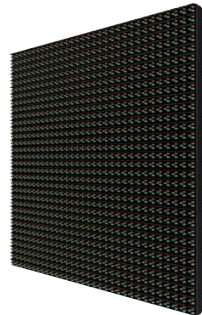
SMD 6.67mm



DIP 16mm



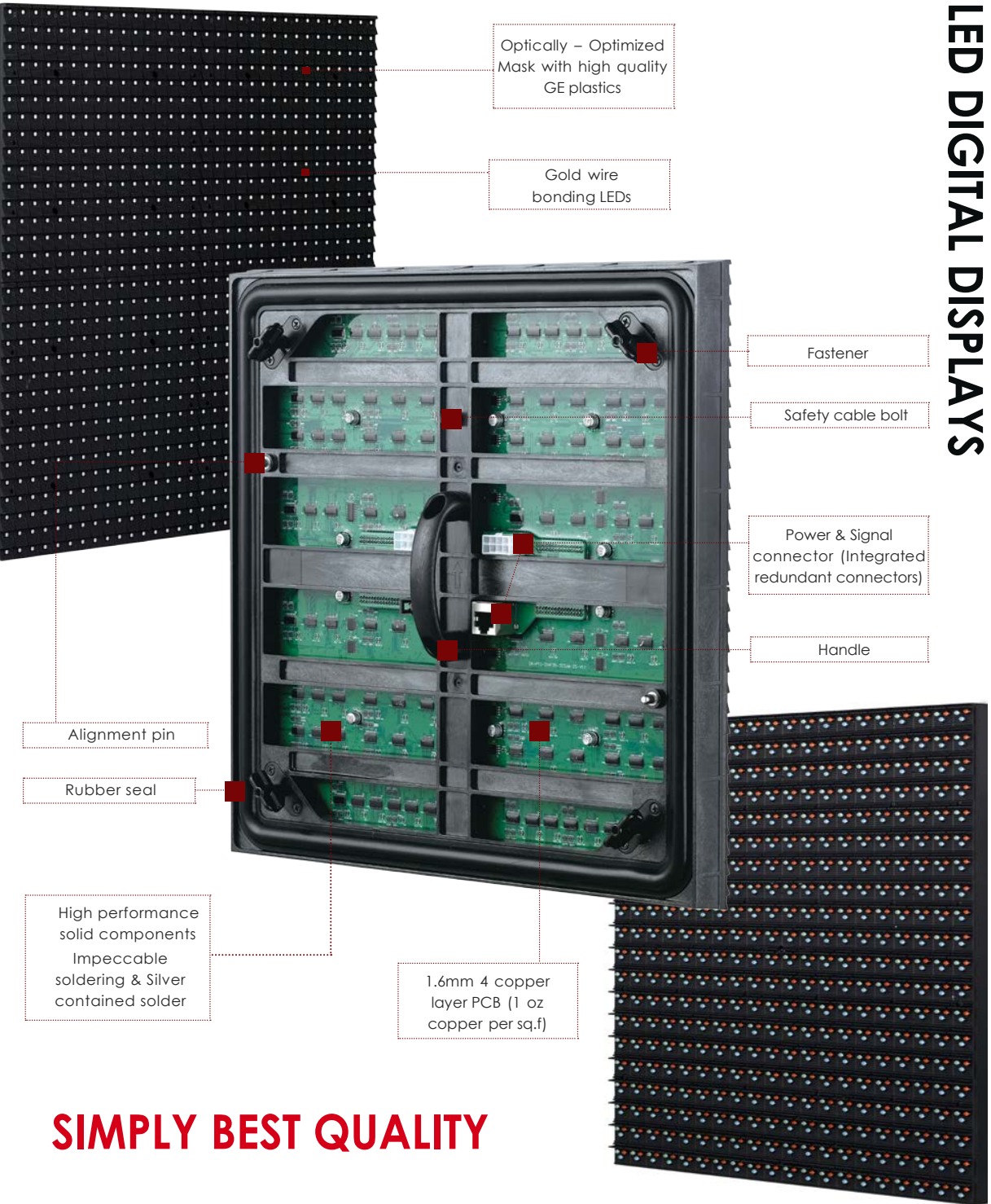
DIP 13.3mm



DIP 10mm

MULTIPLE CONFIGURATIONS CAN BE ATTAINED, LARGE AND SMALL, FOR ANY SIZE DISPLAY WITH OUR MODULE BOARD OPTIONS

LED DIGITAL DISPLAYS



Optically – Optimized Mask with high quality GE plastics

Gold wire bonding LEDs

Fastener

Safety cable bolt

Power & Signal connector (Integrated redundant connectors)

Handle

Alignment pin

Rubber seal

High performance solid components
Impeccable soldering & Silver contained solder

1.6mm 4 copper layer PCB (1 oz copper per sq.f)

SIMPLY BEST QUALITY

LED MIRRORS



LED BACK-LIT MIRRORS



Model No. KL-VML-XXXX

Dimension Available in multiple sizes

5mm frame; anti-fog coating glass

mirror Backed with shatter proof

film; rust- resistant

Model Number	Mirror Dimension (in)	Wattage	Tubes Needed	Stock
KL-VML3042	30X42	50W	(2) 30" tubes (2) 42" tubes	In Stock
KL-VML3048	30X48	56W	(2) 30" tubes (2) 4' tubes	Special Order
KL-VML3054	30X54	56W	(2) 30" tubes (2) 4' tubes	In Stock
KL-VML3636	36X36	60W	(4) 3' tubes	In Stock
KL-VML3648	36X48	66W	(2) 3' tubes (2) 4' tubes	Special Order
KL-VML3654	36X54	66W	(2) 3' tubes (2) 4' tubes	Special Order
KL-VML4242	42X42	60W	(4) 42" tubes	In Stock
KL-VML4254	42X54	66W	(2) 42" tubes (2) 4' tubes	In Stock
KL-VML4848	48X48	72W	(4) 4' tubes	Special Order
KL-VML5454	54X54	72W	(4) 4' tubes	Special Order

EASY INSTALL

LED VERTICAL CUT-OUT BACK-LIT MIRRORS



Input Voltage 120V AC, 50/60Hz

Overall Size H40" x W30" x 2.8"

IP20 rating

Ecological 5mm silvering glass mirror, condensation-free, pencil polished edge & safe corners, 35mm left & right sandblasted bands, finger-print protection, backed with shatter-proof film

2 x 10W T8 LED tubes (excluded)

Extruded aluminum chassis in white powder coating, key-hole slots for easy mirror installation and maintenance

Suitable for both landscape and portrait style installation

Lead cable for mains power connection

Mounting accessories attached, mini bubble level included

LED SPORTS FIELD LIGHTS





GEN 1

Model No. KLHD-SP-300W
Dimension Ø14.2" x 18.9"
Power 300W
Lumen output 39000LM

300W

Model No. KLHD-SP-400W
Dimension Ø14.2" x 18.9"
Power 400W
Lumen output 52000LM

400W

Model No. KLHD-SP-500W
Dimension Ø14.2" x 18.9"
Power 500W
Lumen output 65000LM

500W

Model No. KLHD-SP-750W
Dimension Ø18.6" x 22.9"
Power 750W
Lumen output 90000LM

750W

Model No. KLHD-SP-1000W
Dimension Ø18.6" x 22.9"
Power 1000W
Lumen output 120000LM

1000W

Model No. KLHD-SP-1250W
Dimension Ø18.6" x 22.9"
Power 1250W
Lumen output 148000LM

1250W



GEN 2

Model No. KLHD-SP-300W
Dimension Ø14.5" x 15.7"
Power 300W
Lumen output 39000LM

Model No. KLHD-SP-400W
Dimension Ø14.5" x 15.7"
Power 400W
Lumen output 52000LM

Model No. KLHD-SP-500W
Dimension Ø14.5" x 15.7"
Power 500W
Lumen output 65000LM

Model No. KLHD-SP-750W
Dimension Ø18.7" x 19.7"
Power 750W
Lumen output 97500LM

Model No. KLHD-SP-1000W
Dimension Ø18.7" x 19.7"
Power 1000W
Lumen output 130000LM

Model No. KLHD-SP-1250W
Dimension Ø18.7" x 19.7"
Power 1250W
Lumen output 162500LM



LED SPORTS FIELD LIGHTING

SOLID STATE DESIGN

Unique "SSD" design, simply & Advance, No components are non-removable, ensures durability of led chip. All parts are individual, rugged and strong

SMALL ELECTRON GREAT POWER

Adoption advanced technology, photoelectric conversion in most efficient method, energy saving, and producing more lights out

NO ELECTRICAL INTERFERENCE

State-of-the art circuit system woking perfect with other systems, Ultra-low EMI noise generation eliminating electrical interference

THERMAL MANAGMENT

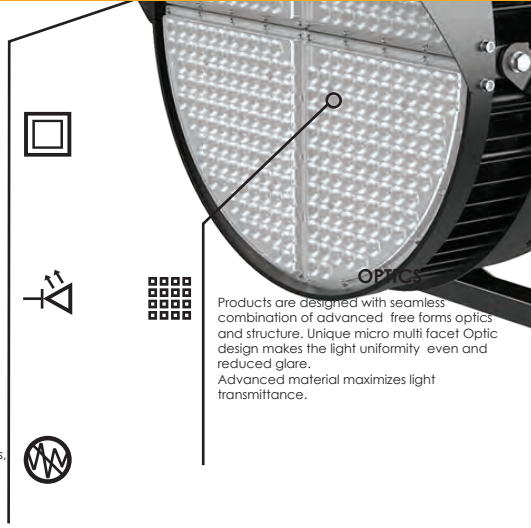
Seamless link of aerometal materials and numerous vents on heat sink improved heat management, keeps away from all field heat, ensures the stability of light system

CONTROL SYSTEM

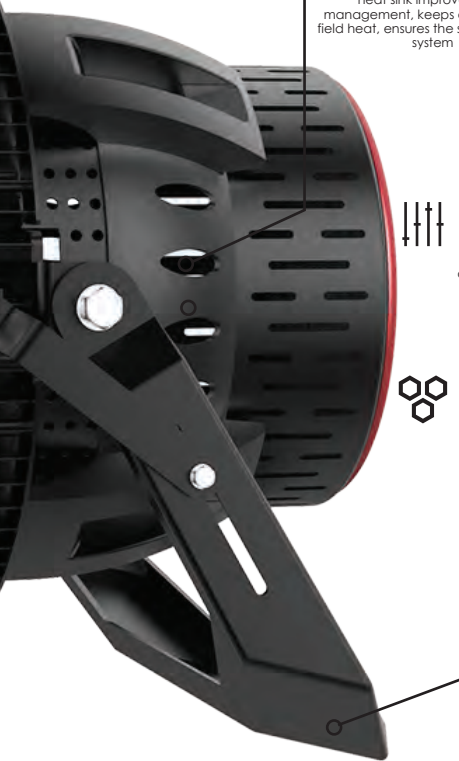
Optimized for live broadcast system by wireless data transmission makes easily on color tuning and dim options,Real time monitoring are available on the working status and performance of every fixtures, recognize potential problems.

EASY OF INSTALLATION

Adjustable beam angle,up to 240°



Products are designed with seamless combination of advanced free forms optics and structure. Unique micro multi facet Optic design makes the light uniformity even and reduced glare. Advanced material maximizes light transmittance.



APPLICATION



IP65 EXTERIOR COMPATIBLE HIGHBAY



APPLICATION

240W

Model No. KLHBL-240W
Dimension Ø12.6" x 6"
Power 240W
Lumen output 31200LM

300W

Model No. KLHBL-300W
Dimension Ø12.6" x 6.2"
Power 300W
Lumen output 39000LM

400W

Model No. KLHBL-400W
Dimension Ø14.2" x 8.5"
Power 400W
Lumen output 52000LM

500W

Model No. KLHBL-500W
Dimension Ø14.2" x 8.5"
Power 500W
Lumen output 65000LM





COMING SOON

PANEL/TROFFER DOOR

MODULAR PARKING LOT LIGHTS

MODULAR HIGHBAYS

POLES, ADAPTORS & BULLHORNS

KRUT LED[®] LLC

www.krut-led.com

111 Preamble Ct.
Anderson, SC-29621

Phone: 864-401-8156
Email: sales@krut-led.com

